

“CUTTING REMARKS”

The Official Publication of the Old Pueblo Lapidary Club
520-323-9154

Officers

President - Pete Peterson 886-9021
Vice President - Jean Barkley 546-1651
Secretary - Pat McMullen 818-2455
Treasurer - Diana Hara 572-0339

Board of Directors

2012 - 2012 Ted Rupp 743-8012
2011 - 2012 Jim Baker 886-2126
2011 - 2012 Skip Barkley 546-1651
2012 - 2013 Merlyn Hiller 296-4469
2012 - 2013 Ray Brown 390-5667
2011 - 2011 Ron Davidson 749-3157 (Advisor)

Membership Chairperson

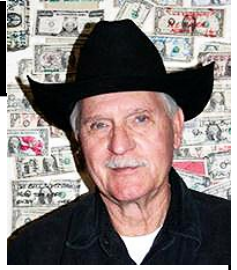
Frank Schleicher (512) 913-4241

Please join us **September 8th** at 9:00am for the monthly meeting. There is an optional social hour that begins at 8:00am followed by an educational program at 9:00am, followed by the monthly meeting. Visitors are always welcome.



Articles or news to be included in the *Cutting Remarks* should be emailed to your Editor, Mike DeMeritt (silverlininggemstones@gmail.com), or feel free to call him at 520-203-8430. Submission deadline is the 20th of each month. Thanks!

THE PREZ SEZ by Pete Peterson



September is here and the weather is cooling off, well for Arizona it's cooler - lower 90's. Our field trip committee is working on a couple of trips that they will reveal at our meeting in September. There is also a sign-up sheet for a trip to the Ray mine in the kitchen. I think it is full but sign up anyway, there is always a chance someone will cancel out. This trip will be led by Wolfgang Mueller, and is always an interesting outing.

I have some health news to report. Our secretary, Pat McMullen, is having knee surgery this month. Pat will probably not be with us for the September meeting and probably not until late September or early October according to his wife Judy. Pat, all of your friends at OPLC wish you a speedy recovery.

I have another concern to report involving disappearing equipment. We had a bench model Freedom donated to us which was to be used for rock sculpturing in a class which would start later this year. It seems to have walked off, disappeared, and I never thought I would have to say this, perhaps STOLEN. We have looked all over and asked if anyone knew where this item could be and have come up empty handed. I can't believe

someone would remove equipment from our club except to maybe clean it or refurbish it and I hope this is the case and by the time this newsletter reaches you the item will appear as mysteriously as it vanished. I'm hoping we see it back soon.

Check our bulletin board for classes, new classes, and starting dates. We are always looking for volunteers. If you are interested in teaching a class, monitoring an open lab, working in the saw room, building maintenance or any other task, please contact me or any other member of the board. Take a look at the list of committees in this newsletter and if you are willing to help any of these chairpersons let them know. And last but not least, if you would be willing to serve as an officer or on the board, let us know.

That's all for now, good luck collecting. Be safe. Have fun.

Pete

WELCOME NEW MEMBERS



Tony Borsellega
Barb Elliott
Jan Kaufman

Jerry Sellers
Lesley Lupo
Barb Duro

Cutting Remarks, Volume 2012, Issue 9, September 2012. Published monthly by the Old Pueblo Lapidary Club, 3118 N. Dale, Tucson, AZ 85712. Telephone: (520) 323-9154, a non-profit organization.

PRIOR MONTH'S MEETING MINUTES... Pat McMullen, Secretary



AUGUST 11, 2012

Vice President Jean Barkley introduced three women from the Arizona History Museum who presented information about the Arizona Historical Society here in Tucson as well as the Arizona Experience/Mining and Mineral Museum which will be opening in Phoenix. Madison Barkley, curator of the Phoenix Museum, provided information about that location. Megan Gately, Education and Outreach Coordinator, described programs that are offered to schools and are geology related. Mary Ann Ruelas, the Educator in the Education and Outreach Division, talked about how organizations such as OPLC can participate.

President Pete Peterson then brought the business meeting to order at 10:00 AM. A quorum was present.

A motion was passed to accept the minutes of the July meeting.

Treasurer Diana Hara told us that we are in the black now due to our raffle ticket sales and the shop passes purchased. We did not have to pay the \$900 as we had planned for the mandatory backflow valve replacement as Murray Hiller found a plumber who did it for \$425. A motion was passed to accept the treasurer's report.

Two new members were introduced: Barb Elliott and Jerry Sellers. Several guests were present.

All wished Jerry Foley a Happy Birthday.

The Coniglios and the Lackows celebrated anniversaries this month.

Some members say they have not been receiving Cutting Remarks via Email and Pete Peterson will be discussing this with the Membership chairman.

Nominating Committee: Murray Hiller said that he has the new slate and will announce it at our next meeting.

Classroom training: As per our discussion at the July meeting, ideas are being developed to properly train the club members in the proper use of the classroom equipment. It is a safety issue as well as a monetary one. Equipment that is used properly will last longer. Monitors have the authority to correct anyone seen using equipment improperly. Perhaps cards will be issued after a monitor helps train a member or there may be a test to get a card. The Board will discuss different ideas and solutions.

Monitors attending the meeting were introduced and all monitors are asked to please let the Board know what they may need for their classes.

Jenny Coniglio offered to teach a class on beads and beading. It may be called Fun with Beads and there may be a \$5 charge to help the Club. It may be held right after the September meeting. Early September is the Fall bead show in Tucson. A supply list will be available in the September newsletter.

Two of our members each had an article in the August issue of Rock and Gem magazine. Helen Serras -Herman wrote an article called The Natural History of Cephalonia and Ithaca. Bob O'Donnell was featured in Lapidary of the Month and it was titled "Silver and Turquoise Bola".

Melinda Thompson reported that her advertising for the newsletter was going well.

Building and Grounds report: Someone said that some of the motion detector lights were not operating properly, it will be checked out.

Field trips: Bob O'Donnell will plan one next

Wolfgang Mueller has arranged for a trip to the Mission Mine on Friday October 26th. It will be to a different area of the mine than has been used before for mineral gathering.

Historian: no report

Librarian: Twink Monrad reported the library is open for business.

Education: It is ongoing throughout the year.

Kitchen: All is well,

Membership: No report.

Security: Ron Davidson reports that no one has broken in or out.

Silent Auction: Danny Harmsen says all is excellent

Refreshments for monthly meetings: Norma Lackow needs one more for September and two for November. Please call her at 742-7561.

Mike Demeritt says he will be offering a turquoise cutting class. It will be one or two sessions on Sundays. The cost will be \$10.00. People can sign up and Mike will set up times and notify those interested.

Vice President Jean Barkley thanked those who offer to teach classes.

The meeting was adjourned at 10:40 AM. and followed by the door prize drawing and raffle prizes.

Minutes taken by Twink Monrad

OPLC SHIRTS

Don't forget that there are OPLC T-shirts for sale in both long- and short-sleeved versions! Long-sleeved shirts are \$15, and short-sleeved shirts are \$12. What a bargain! And all proceeds benefit the club. Be sure to show your appreciation and pick one (or two!) up! Thanks, everybody!



AUGUST MEETING PRESENTATION

August saw an entertaining meeting presentation presented by a trio of women from the Arizona History Museum. Madison Barkley, Megan Gately, and Mary Ann Ruelas presented information on the Arizona Historical Society here in Tucson, and the Arizona Experience/Mining and Mineral Museum in Phoenix.



Vice President Jean Barkley introducing the speakers at last month's presentation

Front, l-r: OPLC Vice President Jean Barkley, Megan Gately, Madison Barkley, and Mary Ann Ruelas and in the back is our Pres Pete Peterson



MEMBER NEWS



Pat McMullen underwent knee surgery just recently. It sounds like things went well, and he is in recovery at St. Joseph's hospital in Tacoma, Washington. As of this writing, he may only need be there for a few days! Pat's wife Judy wishes to thank all of those well-wishers who contributed their prayers for his successful surgery and speedy recovery. Pat, we hope you are "on the mend" and can't wait to see you back in sunny Arizona!

SEPTEMBER SPEAKER

Our speaker for September: Terri Haag –A Renaissance woman--presenting an overview of her articles for The Lapidary Journal.

Terri Haag is a accomplished writer, art restorer, museum exhibit designer and artist, but has also been an ambulance driver, plant doctor, marketing director, phlebotomist, bartender, sculptor and editor. She has 20 years experience as a freelance artist, specializing in restorations and museum models from original fossils; fossil repair; museum diorama construction; prop construction for film and TV, and murals and faux finishes. She lived and worked in South Africa for 8 years where she created large-scale museum and aquarium exhibits and did restoration work on national historical sites and precious objects de art.

If that's not enough, she's an adventurer, who has smuggled gemstones out of Communist Russia, rode in helicopters over glaciers and in the jungle mountains of New Guinea, babysat baby chimpanzees in Zambia, was swept away by the current while scuba diving in Belize, got married in a Polish salt mine, dived with sharks, force-fed thousands of oil-coated penguins in Cape Town, almost died of malaria in Windhoek, and brought a dead man back to life in Phoenix!!

Currently one of her exhibits is installed at Tucson Botanical Gardens. Called Indications: How Plants Point the Way to Mineral Wealth the exhibit shows how geologists and prospectors often use plants to help them find buried ore deposits. The exhibit features dioramas and showcases mineral and ore samples from our own Harrison Yocum's collection.

But perhaps more familiar to our rockhound group, Terri has also been a feature writer for Lapidary Journal for over 17 years. Her presentation at OPLC will cover an overview of about 10 of her most popular Lapidary Journal articles, including one she did on the monster faceting machine built by some of our OPLC members. Some other topics are fossil hunting in the South African Karoo, early days of the Tucson Gem and Mineral Show, touring a 700 year-old Polish salt mine, meteorites, geo-botany, and of course, the Throne of Scone.

Don't miss this special presentation!

SEPTEMBER CUTTING TIPS

This month, rather than doing my standard “tips”, I figured I’d devote an issue to proper use of machines and equipment here at OPLC. It has been something of an issue here lately, and what better way to educate everybody?

First of all, there are two basic needs involving the proper use of club facilities: safety and economic responsibility. Safety, of paramount importance, will keep our members from being injured. By “economic responsibility” I mean the use of equipment in a manner designed to provide lasting service and keep replacements to a minimum - lapidary machines, with diamond-coated surfaces, are very expensive to maintain! An eight-inch diamond wheel costs about \$215 - certainly not inexpensive! The more often our club needs to replace things, the more quickly we can expect that membership dues, shop usage fees, and the like will need to increase.

Likely the biggest problem we face in any shop area is the dishing of lapidary wheels in the Cabochon Room (it’s not just us - this is a problem area for any shop!) There is a tendency for beginners and veterans alike to use the center of each wheel far more than the edges. I know it’s one more thing to keep track of while cutting a cab, but it might well be one of the most important! As wheels get more worn in the center, they “dish” (become concave). As this happens, the surface cuts unevenly, and the sponge backing in the center becomes softer, only adding to the problem. If not combated, a stripe will soon appear down the center of the wheel. The most essential time to practice this is directly after installing new wheels - something we just did in the Cab Room. *Once started, the problem becomes harder and harder to fix as the wheels become more concave.* The trick for avoiding all of this is to constantly sweep your cab back and forth across the width of the wheel. Don’t be afraid to get right to the edge - metal-bonded wheels sport a 45-degree bevel at the edges to avoid gouging your material, and resin-bonded wheels have marginally-thicker sponge-backed edges for the same reason. If you are still gouging your material, it is likely that you are using too much pressure against the wheel (try lifting just at the edge of the wheel...) If you “run the wheel” (use the front-bottom quadrant of the wheel as most professionals do), the motion you will develop while working across the wheel as well will become something akin to circular in total. While drifting back-and-forth, from left to right and back to left, try to slow down your approach and leave of each edge - this will keep your cab hovering at the edges of the wheel more often and help use the diamonds there. As wheels become more worn in the center, the problem again gets worse because most cutters will err on the smoother surface and stay away from the faster-cutting edges. *Properly-used diamond lapidary wheels will look the same in texture all across the width of the wheel*, something we definitely aren’t doing now, and should all aspire to.

In my opinion, saw blades should be our second most important issue. When starting any cut on a diamond saw, grind or prep the leading surface edge to be as close to perpendicular to the saw blade as possible. *If the edge is at any angle other than 90 degrees to the*

(Continued on page 12...)

SEPTEMBER STONE: SAPPHIRE

Sapphire is the gemstone for September, and the common name for gem-grade **Corundum** (technically, **Ruby** is another name for gem-grade corundum, but only for those rare red crystals with chromium as the chromophore, or coloring agent...) Corundum is an oxide of Aluminum that occurs as trigonal crystals (typically barrel-shaped with several steep hexagonal bipyramids, tabular bipyramids, usually lamellar, and sometimes granular). It has vitreous luster and is translucent to transparent. It has no cleavage, a Moh's hardness of approximately 9.0, and a density of approximately 4.0. Color is usually grey, weakly blue, yellow, or red, but all colors can occur. Normally pure Al_2O_3 , the color-giving ions, such as Cr (ruby) or Fe and Ti (sapphire), are present only in very small amounts - typically only a few parts per million! Crystal structure can be described as an almost-hexagonal close packing of spheres of O atoms in which two-thirds of the octohedrally-coordinated interstices are occupied by Al and the remaining third are empty. Corundum occurs in silicon-poor igneous rocks such as syenites and nepheline-syenites and associated pegmatites, in contact zones between peridotites and surrounding rocks, and in metamorphic rocks such as gneisses, mica-schists, and crystalline limestones. Because of its hardness and chemical resistance, it is also widespread in sand and gravel deposits.

Sapphire is found all over the globe - important deposits occur in Sri Lanka, Cambodia, Thailand, Vietnam, Tanzania, Madagascar, and Queensland, Australia, among others. We have gem occurrences in the United States in North Carolina and Montana. The most famous sapphire deposits, though long mined-out, occurred at high altitude at Padar in Kashmir, India, where marble and other metamorphic rocks are cut by pegmatitic dykes. New sources are found often, especially in Africa, but a very recent find in Ceylon, Sri Lanka, shows amazing promise with deep-blue transparent crystals that can weigh over 20 grams! Sapphire is fairly easy to cut and polish, though beginners sometimes have trouble with pre-polish. Try using a 3,000-grit diamond lap, works every time for me... You will probably never cut another stone with such sharp facet breaks (unless you are a diamond brillianteer!) You *will* go through laps/saws more quickly, thanks to corundum's incredible hardness. But after factoring in corundum's high refractive index (1.76), decent dispersion, and amazing variety of colors, you'll come to understand why this species is truly "king of the colored gems"!

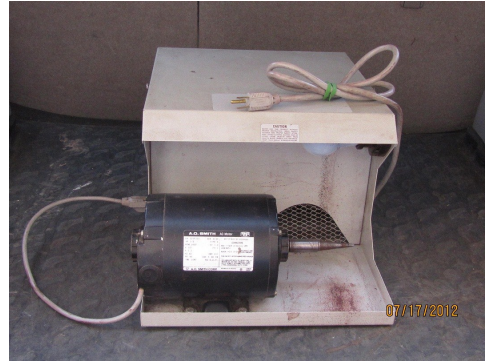
Compiled/written by Mike DeMeritt, 2012

"BASICALLY FUN WITH BEADS"

A Basically Fun with Beads class will be held after the September 8 meeting. It will be held in the clubhouse kitchen and will last about 1 - 1 1/2 hours for \$5.00. Jenny Coniglio will cover what types of threads or wire to use with various beads, handy tools and how to attach different clasps.

This will be a good way to use beads you already have or might buy at the upcoming Bead and Gem show September 7 - 9. If there is enough interest we might continue to meet to explore design ideas. Call Jenny at 400-6057 to sign up.

BUY/SELL/TRADE



COVINGTON 16" VIBRATING LAP (model 396) -- excellent condition. \$200 (new \$400+)

HANDLER POLISHER & DUST COLLECTOR (model 76E) Includes AO Smith Lathe/motor. \$175 (new \$400+)

Contact Al Romey 520-825-7263 or AWR1@Q.com

HIGHLAND PARK 27" VIBRO-LAP - Used, but in good working condition. The grand-daddy of commercial vibrating laps. Five-year-old daughter Xanadu shown for scale and not included in purchase (unless you're interested...) \$750 OBO (new \$1980 + \$275 crate ship) Contact Mike DeMeritt, 520-203-8430, or email silverlininggemstones@gmail.com.



If you have anything for the new Buy/Sell/Trade advertisements, please contact your friendly editor at the phone/email provided on the cover page. Ads are free, but must be renewed each month.

Please, no commercial advertisements - those are for the Ad Section...

***THE ONE SERIOUS CONVICTION THAT A MAN
SHOULD HAVE IS THAT NOTHING IS
TO BE TAKEN TOO SERIOUSLY.
-SAMUEL BUTLER***

Rockhounds!

Copper City Rock Shop

566 Ash St.
 Globe, AZ 85501
 928-425-7885
 Open 9 to 5, Tuesday-Saturday

10% off

**Well worth
 the trip!**

We have something for everyone. Cabochons, slabs, cutting rough, minerals, fossils, carving rough, metaphysical goods, tumbling grit, gift items. Visit our web site for just a taste of what we have. Then come up and see it all. Bring this ad and get 10% off.

E-mail: mediz@cableone.net

Ad Expires December 2012



Beta Diamond Products, Inc.
www.betadiamond.com
 Ph: (714) 777-7144
 Fax: (714) 714 693-9351
 E-mail: info@betadiamond.com

BETA IS BETTER!

Beta Diamond Products, Inc has been providing diamond abrasive consumables for lapping and polishing since 1986, specializing in diamond powder, compound, spray, aluminum oxide (linde A, B, C), cerium oxide, silicon, carbide, boron carbide, discs, and more. We supply industry, government, universities, faceters and hobbyists with excellent quality, delivery, service and price.



Ad Expires June 2013

DON'T FORGET

Please don't forget to continue to bring in **YOUR** (or anyone else's for that matter) aluminum cans to the Club for recycling. Your contribution would be greatly appreciated to help add \$'s to the Club's treasury. **Thanks!**

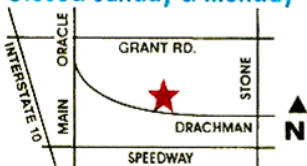
JEWELERS SUPPLIES

GOLD ★ SILVER ★ SHEET ★ WIRE

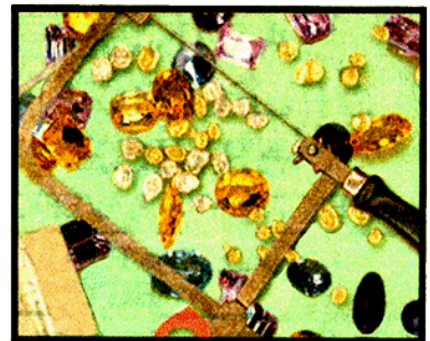
SINCE 1967

For The Professional And Hobbyist

Tuesday - Friday 9-5
 Saturday 10-2
 Closed Sunday & Monday



- SILVERSMITH TOOLS
- LAPIDARY EQUIPMENT
- FOREDOM TOOLS
- STONES • BEADS
- FINDINGS • CHAINS
- HOW TO BOOKS



882-8750

Starr Gems, Inc.
www.silversupplies.com

220 W. DRACHMAN

SHOWCASES & JEWELRY
 DISPLAY ACCESSORIES

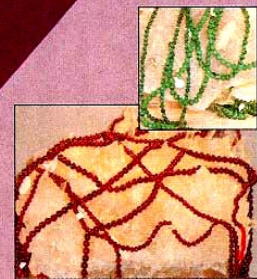
Ad Expires November 2012

MONEY SAVING DISCOUNTS

- **DAH Rock Shop** - 10% on most items. See ad in this issue. 520-323-0781
3401 Dodge Blvd, Tucson
- **Colorwright** - 520-623-3874 Web address: <http://www.color-wright.com/>, **MAILING ADDRESS:** 1520 S Desert Crest Dr., Tucson, AZ 85713. Amount of discount depends on item(s) being purchased.
- **Jay's of Tucson** - 30% discount excluding orange tag items, sterling silver sheet and wire. 520-323-1123 (corner of Speedway & Swan)
4627 E Speedway, Tucson
- **Jed's Rock Shop** - 20% on all items. 520-882-6044 - **6275 N Sandario Rd, Tucson**
- **Copper City Rock Shop** - See ad in this issue. 10% discount with ad. 928-425-7885
566 Ash, Globe, AZ 85501
- **Kent's Tools** - 10% 520-624-8098 - **133 E Grant Road, Tucson**
- **Tucson Mineral & Gem World** - 10% 520-883-0682 Web address:
www.tucsonmineral.com
2801 South Kinney Road, Tucson

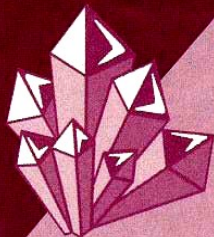
DAH ROCK SHOP

- Crystals
- Fossils
- Minerals
- Meteorites
- Faceted Stones
- Cabochons
- Turquoise
- Tumbled Stones
- Bookends
- Eggs & Spheres



YOUR BEAD STOP
104
DIFFERENT
VARIETIES
OF SEMI-PRECIOUS
STONE BEADS

All Beads Picked
by Resident Graduate
Gemologist
Huge Selection of
Sterling Silver Findings
Turquoise from
Around the World



3401 N. Dodge, 3 blocks N. of Ft. Lowell (520) 323-0781

**LAPIDARY EQUIPMENT -
STERLING SILVER JEWELRY -
BOOKS - SLABS - ROUGH
STONES - BEADING SUPPLIES -
SILVERSMITH TOOLS**

**HOURS: (TUES - SAT 9:30 - 5:30
(CLOSED SUN & MON))**

**OPLC MEMBERS RECEIVE 10%
OFF ON ALL MERCHANDISE
EXCEPT SPECIALS.
STERLING SILVER WIRES AND
SHEET RECEIVE THE NEXT PRICE
BREAK**

Ad Expires March 2013

(September Cutting Tips Continued...)

work, the blade will veer toward the base of the angle. This cannot be stressed enough! Take your time when starting a cut, and keep the saw blade at 90 degrees to the work! Do not use pressure to force the work through the blade - let the diamonds on the blade do their job. Applying pressure to the work will *only* wear the blade faster, and create a dished cut. Once a blade becomes dished, it will no longer cut correctly, and will only dish more as it is used. Diamond saw blades are not designed to endure side loads, and can eventually fly apart at higher RPM's if the dishing is allowed to increase. Forcing material through the blade can also make a saw out-of-round, throwing it off-balance - once again a safety issue. If you are using a saw without an automatic cut-off (the 10" saw in the cab room, for instance...), be sure to wait with the saw to watch for the end-of-cut. Diamond blades nearly always end a cut by breaking the material at a notch, which can distort or ruin the blade if allowed to keep feeding (the work is at an angle to the blade, right? No good!) If you go back to a cab machine while your piece is in the saw, be sure to keep checking the saw, and stay close when it nears end-of-cut.

That's it for now. I'll continue this next month with more ideas regarding the other rooms.

Provided by Mike DeMeritt, 2012



DONATIONS



Jim Goff - Boxes of slabs, Montana agates, limb casts, grit, silicon carbide wheel, petrified wood, opalized wood, thunder eggs, dendritic opal, jaspers and agates.

To donate to OPLC, just see or contact Dan Harmsen. at 721-8452.

Rate Schedule for Advertisements - - - Ad Sizes & Prices

1/8 of a page -
2" H by 3 1/2" W
\$36.00 per year
\$18.00 per half year
\$3.00 per month

1/4 of a vertical page -
4 1/2" H by 3 1/2" W
\$48.00 per year
\$24.00 per half year
\$4.00 per month

1/4 of horizontal page -
2" H by 7 1/4" W
\$48.00 per year
\$24.00 per half year
\$4.00 per month

1/2 page - 4 1/2" H by 7 1/4" W
\$96.00 per year
\$8.00 per month

Full page - 9 1/2" H by 7 1/4" W
\$168.00 per year
\$14.00 per month

WEEKLY WORKSHOP SCHEDULE Phone 323-9154

Mondays

1PM - 4PM **Faceting Guild** (Exp. Facetors Only)
Monitor - Paul Head 296-0331

1PM - 4PM **Silversmith Lab**
Monitor - Terry Cox

6PM - 9PM **Beginning Faceting**
Monitor - Earl Zoeller 886-3518

Tuesdays

9AM - Noon **Cabbing**
Monitor - Billy Bob Riley

9AM - Noon **Silversmithing Lab**
Monitor - John Poole 777-5588

10AM - 1PM **Rock Sawing**
Monitor - Jim Baker 886-2126

6PM - 9PM **Silversmithing**
Monitor - Ray Brown 390-5667

Wednesdays

6PM - 9PM **Beginning Casting**
Monitor - Chuck Lundstrom 577-6446

6PM - 9PM **Cabbing**
Monitor - Keith Haubert 784-8283

6PM - 9PM **Silversmithing Lab**
Monitor - Bill Cascio 638-8144

Thursdays

10AM - 1PM **Rock Sawing**
(BY APPOINTMENT ONLY)
Monitor - Jim Baker 886-2126

Saturdays

10AM - 3PM **Silversmithing**
Monitor - Ray Brown 390-5667/
Terry Cox

10AM - 3PM **Cabbing***
Monitor - Mike DeMeritt 203-8430

Sundays

12PM - 4PM **Cabbing***
Monitor - Mike DeMeritt 203-8430

***(INSTRUCTION PROVIDED AS AVAILABLE)**

COMMITTEES

ADVERTISING

Melinda Thompson 730-3082

BUILDINGS, GROUNDS & EQUIPMENT

Dave Arens 749-2413

CLASSES & PROGRAMS

Jean Barkley 546-1651

FIELD TRIPS (COMMITTEE)

Jerry Behn 761-1924

Bob O'Donnell 886-0384 (Chairperson)

Shiela Powell 578-1976

Al Romey 325-7263

HISTORIAN

Twink Monrad 297-9454

JUNIOR EDUCATION

Gretchen Arnaiz 747-1511

Sheila Powell 578-1976

KITCHEN

General Membership

LIBRARIAN

Twink Monrad 297- 9454

MEMBERSHIP

Frank Schleicher (512) 913-4241

SECURITY

Ron Davidson 749-3157

SILENT AUCTION

Dan Harmsen 721-8452

Old Pueblo Lapidary Club
 (Cutting Remarks - Sep 2012)
 3118 N. Dale
 Tucson, AZ 85712
 (520) 323-9154

OPLC Membership Application - Please Print

Name1 _____ Name 2 _____ Date _____

Local Address _____

City _____ State ____ Zip Code _____ Phone number (____) _____

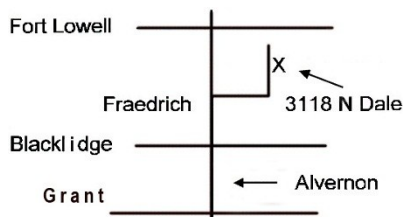
Email address _____ Summer Dates: From _____ To _____

Summer Address _____

City _____ State _____ Zip Code _____

Type of membership:	1st Quarter	2nd Quarter	3rd Quarter	4th Quarter	Annual Renewals
Single Member	\$25.00	\$20.00	\$15.00	\$10.00	\$20.00
Couple (same address)	\$35.00	\$27.00	\$22.00	\$15.00	\$25.00
Junior	\$12.50	\$10.00	\$7.50	\$5.00	\$10.00

Mail to: Membership Chairperson, Old Pueblo Lapidary Club, 3118 N. Dale, Tucson, AZ 85712



The Business Meetings are held on the 2nd Saturday of each month. A pre-meeting social hour (except for the December meeting) is at 8:00 a.m., followed by an educational program, and ends with the monthly meeting. Visitors are most welcome.