

“CUTTING REMARKS”

The Official Publication of the Old Pueblo Lapidary Club
520-323-9154

Officers

President Victoria Fila 664-0302
Vice President Malcolm Currie 360-707-1630
Secretary Bill Penrose 780-1143
Treasurer Pat Droll 345-2792

Board of Directors

2019 - 2020 Skip Barkley 546-1651
2019 - 2020 Bob Powell 762-1089
2020 - 2021 John Poole 777-5588
2020 - 2021 Ted Rupp 743-8012
2020 Mark Davidson 975-6075
2020 David Schulte (Advisor) 954-8554

Membership Chairperson

Janet Keisler 333-3398

Please join us March 14th at **9AM** for the monthly meeting. There is an optional social hour that begins at 8:00am followed by an educational program at 9:00am, followed by the monthly meeting. Visitors are always welcome.



Articles or news to be included in the *Cutting Remarks* should be emailed to your Editor, Mike DeMeritt (silverlininggemstones@gmail.com), or feel free to call him at 520-455-5378 or (520) 240-5133. Submission deadline is the 20th of each month. Thanks!

THE PREZ SEZ by Victoria Fila, President



Hello everyone!

I hope everyone found a lot of nice rocks and other lapidary items at this year's Gem Show!

Our next board member meeting will be held on Tuesday, March 3 2020

We have posted the pipe-wrapping volunteer sheet on the board in the kitchen. Please sign up to help. We will start at 8:00 AM. If we have enough volunteers we should be able to make quick work of getting all pipes wrapped. It was decided at the board meeting to have all labs closed until we are completed.

A special thank you to Bill Penrose and John Poole for their contribution to our members gem show experience and finds.

If you have not been able yet there is a very nice story in the Tucson EZ guide on Helen Serras-Herman starting on page

52. I personally love the title, "Here's Helen".

Peridot trip San Carlos Reservation, Globe

Date: 3/28/20

Meet time: 9:30 am

Meet place: the Circle K on Rt 70.

Cost: \$35 for each person, plus \$10 for reservation permit per person.

Tools needed: sledgehammer for larger rocks. Rock hammer. Small shovel, gloves, hiking boots is best. Plenty of water, lunch. Sunscreen as there is no shade. Bucket and egg cartons for small pieces.

-Victoria

NOTE FROM THE EDITOR

Hello to all of our OPLC members! I need to apologize for missing the newsletter last month. This year's Gem Show was a bit overwhelming for our family (yes, even with all of the practice we've had!) I simply wasn't able to make time for getting the Cutting Remarks put together. I'll do everything I can to keep this a one-time happenstance. Hope everyone enjoys this issue! As an aside, the Coronavirus spread seems to be getting a bit uglier every day - I think it is fair to say that our membership are among those who need to take the most care in this situation. Wash those hands and stay at home if you feel sick! -Mike

Front Cover Pictures: The blue version of **Beryl, Aquamarine** is March's Birthstone, as displayed by this very well-cut gem; **Eudialyte** from Greenland will cut tri-color cabochons of red, black, and white.

Cutting Remarks, Volume 2020, Issue 3, March 2020. Published monthly by the Old Pueblo Lapidary Club, 3118 N. Dale, Tucson, AZ 85712. Telephone: (520) 323-9154, a non-profit organization.



Minutes of OPLC Membership Meeting
Feb 15, 2020 10:00 AM at OPLC

A quorum was not present.

Rocky Mountain Federation – Jody Brewster of the Rocky Mountain Federation of Mineralogical Societies was present. She is the Nevada-Arizona Regional Director, and gave a summary of the organization and its functions. She invited members to the RMFMS convention in Big Piney, Wyoming June 19-21. The Federation has a large number of videos and slide shows available to member clubs for use at their meetings. She left the club with a directory of member organizations and a library listing.

Financial report – Pat Droll - To date, the club has spent 10% of the budget allocated and approved at the January meeting. The largest item was new wheels for the cab lab, which accounts for the January bump. The financial position of the club is stable.

Membership report = Janet Keisler - The club has 290 members in good standing as of the February meeting. Three new members introduced themselves.

Field Trips – Victoria Fila –

RMFMS field trip from Winkleman at 8 am, Feb. 22 (canceled due to weather after meeting)

March 21 – peridot in the White Mountains

April 18 – geodes at Nuevo Corrales (near Ruby)

May or other – petrified wood at Snowflake Date TBA.

TCMS Show – we had a large and varied display this year with contributions by many members.

Hob Nob – the Mexican food theme this year was a success, and pay-at-the-door worked better than charging directly for food. The national award was won by a 14 year old girl.

Club building maintenance – Outdoor pipe wrapping will be carried out Saturday, March 21, by volunteers. Labs will be closed until the work is complete.

There will be a tailgate sale March 14 after the general meeting. North lot parking will be closed except to vendors until 8:30, as usual.

Silent auction – no report – no silent auction at this meeting

Meeting adjourned 9:30.

OPLC Speakers Forecast 2020

Here is the latest list for our upcoming speakers.

Chris Osterman, “Silver Boulders Treasure” (March 14, 2020)

Bob & Elaine Royer, “Tour of Swarovski crystal jewelry in Austria” (April 11, 2020)

Eric Fritz, History of Turquoise (May 9, 2020)

Angéline Fahey, Tucson Wildlife Center (June 13, 2020)

Mark Marikos “Diamonds”

Please do come to the meetings and enjoy these great speakers and their presentations.

Looking forward to seeing you all soon,

Helen Serras-Herman, OPLC Program Chair

“THE TREZ SEZ...”

It’s that time of year - dues are “due” at OPLC! Don’t forget to renew your membership, so you’ll enjoy uninterrupted use of the facilities here at our fine club!

Renewal forms are available at the club (try asking a monitor) or on the back of this newsletter. If you use the Newsletter form you MUST see Janet Keisler for a waiver release form! (This form is on the back of the full-page Membership Form). Bring your completed forms to Janet Keisler, or any monitor or Board Member. Thanks!

WELCOME NEW MEMBERS



**Babinton Sancler
Stephen Smart
Michael Hoover
Van Chiem
Bobbie Oosterbaan
David Sar**

**Ron Corso
Bev Corso
Chet Kostrzewa
Susan Kostrzewa**

*Do what you can,
With what you have,
Where you are.*

-Theodore Roosevelt



Patti Polk - 2 bags slabs and 2 buckets of rough

Ed Jones - Trim saw

Dan Lynch (USFG) - Faceting rough ametrine, garnet

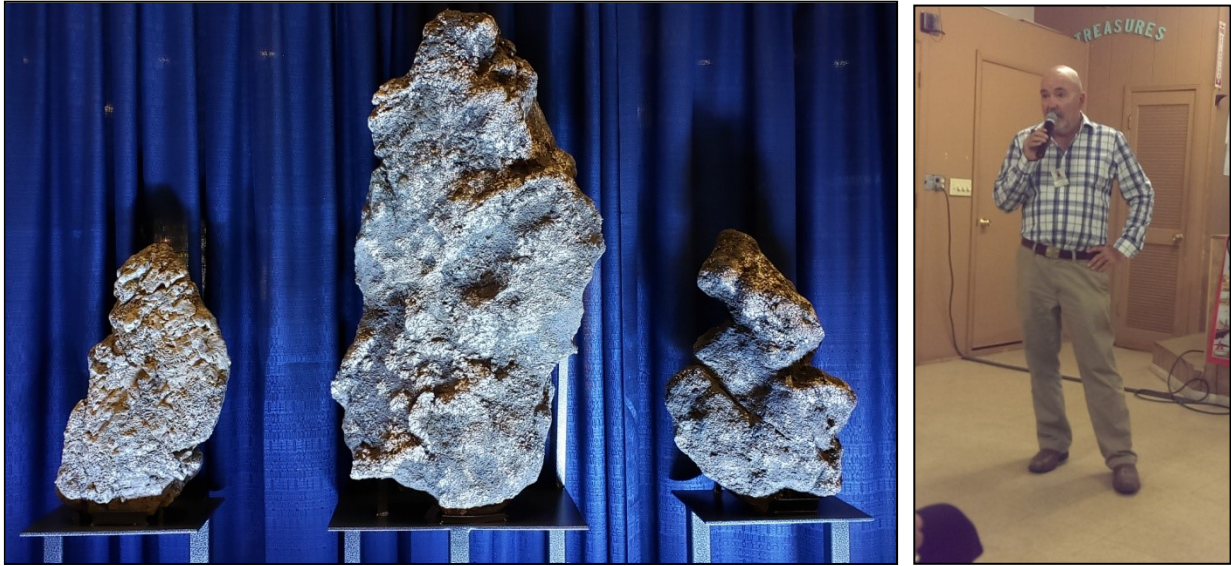
Ray Miller - Faceting rough amethyst, rose quartz

Farooq Hashmi - Rough amazonite, crystal

To donate to OPLC, just contact Dave Richardson at (520) 245-2172.

March 2020 OPLC Speaker – Chris Osterman

Chris Osterman talking on the discovery of the “**Silver Boulders Treasure**”



We are in for a very unique treat for our March 14, 2020 OPLC monthly meeting. Our very own distinguished member, Dr. Chris Osterman, will share with us the find and amazing discovery of the silver boulders that were on exhibit at the 2020 Tucson Gem & Mineral Show.

Chris Osterman has been involved with gold, silver and copper mining for the last 35 years. After earning a Ph.D. in Geology at the Colorado School of Mines, Chris has lived and worked in southern Africa, North and South America, and Central Asia. He served as the Chief Executive Officer of First Mining Finance Corporation, a company dedicated to the exploration of gold and silver deposits throughout the Americas, and is currently President of the Phoenix Silver Corporation, which holds the silver boulders and property.

An exciting new find representing the largest surviving group of native silver boulders in the world was discovered in 2018. For nearly 200 years, prospectors in the Southwest rumored about the existence of silver boulders lying right on the surface in Arizona, and bonanza-grade silver lodes existing underground. It was believed that Spanish conquistadors may have explored the Richmond Basin in Gila County, in Arizona, for silver in the 16th and 17th centuries. The rumors were proved true with this amazing discovery in 2018.

A trio of huge silver boulders and an assortment of smaller specimens were discovered during a careful search by prospectors. These enormous natural specimens of precious silver weigh a collective 610 pounds, or 8,896 troy ounces. The largest silver boulder, after cleaning, weighs 411 pounds. They were found near each other in an arroyo or stream bed, where they had travelled after becoming dislodged by weathering from their vein outcrops.

Chris Osterman has shared with us several of his discoveries of mining Mongolian turquoise and Mexican leopard opal, and is now returning to share this new amazing discovery, an unbelievable Arizona treasure.

Our previously scheduled speaker, Bob Jones, unfortunately cancelled his talk, due to health reasons. Hopefully we can reschedule him another time.

Please join us for the super presentation by Chris Osterman on the Silver Boulders.

Looking forward to seeing all of you on March 14,

Helen Serras-Herman, OPLC Program Chair



HAREX INTERNATIONAL LLC

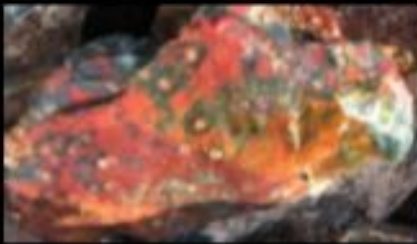
DISTRIBUTOR WHOLESAL & RETAIL

ROUGH ROCKS, MINERAL SPECIMENS, METAPHYSICAL PRODUCTS FROM INDIA & INDONESIA

WEB:- HAREXINTL.COM EMAIL:-HAREXINTL@GMAIL.COM

HIMEER ZAVERI (HARRY) 520-500-4554

2030 E BROADWAY BLVD SUITE # 1 TUCSON AZ 85719



Get out there and rockhound!



Arizona Lapidary & Gem Rough
7320 E Broadway, Tucson AZ 85710
arizonalapidary.com 520-399-6641

Come Visit Us at Tucson's
Year-Round Gem Show

Minerals ~ Cabochons

Lapidary Rough ~ Crystals

Custom Design ~ Rock Cutting

Club Member Discount:

10% OFF Rough Rock

Allen's Treasure House

Lapidary supplies, minerals, decorative objects, watch batteries, maps, prospecting tools, much more.



www.allens-treasure-house.com

4313 E Grant Road (near Columbus); Tucson AZ 85712;
(520) 326-5550; mail@allens-treasure-house.com

Call for hours.

Ad Expires June 2017



Beta Diamond Products, Inc.

www.betadiamond.com

info@betadiamond.com

(714)777-7144

Beta Diamond Products would like to thank Old Pueblo Lapidary Club members for choosing our diamond consumables for their polishing and faceting needs. Beta Diamond Products has been in business since 1986 supplying the faceting community with the best U.S. micronized diamond on the market. Use our diamond powder and diamond spray – club favorites! Ask other members about our excellent quality, delivery and price.



Beta Is Better!!!

Ad Expires May 2016

JEWELERS SUPPLIES

GOLD ★ SILVER ★ SHEET ★ WIRE

SINCE 1967

For The Professional And Hobbyist



882-8750

Starr Gems, Inc.

www.silversupplies.com

Tuesday - Friday 9-5

Saturday 10-2

Closed Sunday & Monday



- SILVERSMITH TOOLS
- LAPIDARY EQUIPMENT
- FOREDOM TOOLS
- STONES • BEADS
- FINDINGS • CHAINS
- HOW TO BOOKS

220 W. DRACHMAN

SHOWCASES & JEWELRY
DISPLAY ACCESSORIES

OPLC Members Receive 10% off select merchandise,
And 3-ounce price break on all silver purchases!

Ad Expires June 2015

MONEY SAVING DISCOUNTS

- **DAH Rock Shop** - 10% on most items, \$10 minimum purchase. 520-323-0781
3401 Dodge Blvd, Tucson
- **Colorwright** - (928) 862-4120, Web address: <http://www.color-wright.com/>, **MAILING ADDRESS:** . 2160 Shelby Road, Suite 101, Sedona AZ 86336. Amount of discount depends on item(s) being purchased.
- **Jay's of Tucson** - 30% discount excluding orange tag items, sterling silver sheet and wire. 520-323-1123 (**4813 E Speedway in Pinecrest Center**)
4627 E Speedway, Tucson
- **Jed's Rock Shop** - 20% on all items. 520-882-6044 - **6275 N Sandario Rd, Tucson**
- **Copper City Rock Shop** - See ad in this issue. 10% discount with ad. 928-425-7885
566 Ash, Globe, AZ 85501
- **Kent's Tools** - 10% discount. 520-461-1350 - **2745 N 1st Avenue, Tucson**
- **Tucson Mineral & Gem World** - 10% 520-883-0682 Web address: www.tucsonmineral.com
2801 South Kinney Road, Tucson
- **Arizona Lapidary** - Arizona Lapidary & Gem Rough - 10% Discount off rough rock 520-399-6641
7320 E Broadway Blvd, Tucson
- **Silver Lining Gemstones** - 20-35% discount on most items. 520-203-8430, or see Mike DeMeritt at any of his labs. Includes Instagram Store (IG Name **silverlininggemstones**)
- **Starr Gems** - 10% Discount on select merchandise, and 3-ounce price break for all silver purchases. See ad in this issue. **220 W Drachman, Tucson**

DON'T FORGET

Please don't forget to continue to bring in **YOUR** (or anyone else's for that matter) aluminum cans to the Club for recycling. Your contribution would be greatly appreciated to help add \$'s to the Club's treasury. **Thanks!**

Rate Schedule for Advertisements - - - Ad Sizes & Prices

1/8 of a page -
2" H by 3 1/2" W
\$36.00 per year
\$18.00 per half year
\$3.00 per month

1/4 of a vertical page -
4 1/2" H by 3 1/2" W
\$48.00 per year
\$24.00 per half year
\$4.00 per month

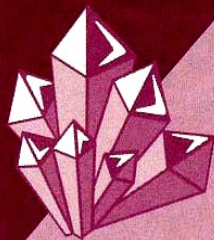
1/4 of horizontal page -
2" H by 7 1/4" W
\$48.00 per year
\$24.00 per half year
\$4.00 per month

1/2 page - 4 1/2" H by 7 1/4" W
\$96.00 per year
\$8.00 per month

Full page - 9 1/2" H by 7 1/4" W
\$168.00 per year
\$14.00 per month

DAH ROCK SHOP

- Crystals
- Fossils
- Minerals
- Meteorites
- Faceted Stones
- Cabochons
- Turquoise
- Tumbled Stones
- Bookends
- Eggs & Spheres



YOUR BEAD STOP

104
DIFFERENT
VARIETIES
OF SEMI-PRECIOUS
STONE BEADS

All Beads Picked
by Resident Graduate
Gemologist

Huge Selection of
Sterling Silver Findings
Turquoise from
Around the World

3401 N. Dodge, 3 blocks N. of Ft. Lowell (520) 323-0781

**LAPIDARY EQUIPMENT -
STERLING SILVER JEWELRY -
BOOKS - SLABS - ROUGH
STONES - BEADING SUPPLIES -
SILVERSMITH TOOLS**

**HOURS: (TUES - SAT 9:30 - 5:30
(CLOSED SUN & MON)**

**OPLC MEMBERS RECEIVE 10%
OFF ON ALL MERCHANDISE
EXCEPT SPECIALS. \$10 MINIMUM
PURCHASE.**

**STERLING SILVER WIRES AND
SHEET RECEIVE THE NEXT PRICE
BREAK.**

Ad Expires Sept 2015

COMMITTEES

ADVERTISING

Mike DeMeritt 520-455-5378

BUILDINGS, GROUNDS & EQUIPMENT

Wayne Klement

PROGRAMS

Helen Serras-Herman 761-9907

CLASSES

Victoria Fila 664-0302

FIELD TRIPS (COMMITTEE)

Victoria Fila 664-0302

HISTORIAN

Twink Monrad

JUNIOR EDUCATION

Ron Graichen 529-2661

KITCHEN

General Membership

LIBRARIAN

Bill Cascio 638-8144

MEMBERSHIP

Janet Keisler 333-3398

SECURITY

John Poole 777-5588

SILENT AUCTION

Dave Richardson 245-2172

BUSINESS MEETING REFRESHMENTS

Leia Ballard 780-8641

WEEKLY WORKSHOP SCHEDULE Phone 323-9154

Mondays

9AM - Noon **Faceting Lab & Class**
Monitor - Dave Richardson 245-2172

9AM- 3:30PM **Cabbing**
Monitor - John Watt 520-247-6811

1PM - 4PM **Silversmith Lab**
Monitor - Pat Droll 345-2792

1PM—4PM **Faceting Lab & Class**
Monitor - Dave Richardson 245-2172

3:30PM - 6PM **Cabbing**
Monitor - Margarette Harris 561-2315

6PM - 9PM **Faceting Class**
Monitor - Earl Zoeller 886-3518

6PM - 9PM **Cabbing****
Monitor - Donovan Wagner 869-2050

6PM - 9PM **Silversmithing Lab**
Monitor - Bill Penrose 780-1143

Tuesdays

9AM - Noon **Cabbing***
Monitor - Mike DeMeritt 520-455-5378

9AM- Noon **Casting**
Monitor - Liz Williams (818)300-5262

9AM - Noon **Silversmithing Lab**
Monitor - John Poole 777-5588

Wednesdays

9AM - 1PM **Silversmithing**
Monitor - Dennis Murphy 490-9188

3PM - 6PM **Rock Sawing**
Monitor - Steve Lutes 320-360-4329

6PM - 9PM **Cabbing**
Monitor - Keith Haubert 784-8283

6PM—9PM **Faceting Lab & Class**
Monitor - Bob Powell 403-8980

Thursdays

9AM - Noon **Rock Sawing**
Monitor - Pete Petersen 886-9021

9AM - Noon **Cabbing**
Monitor - Bob Powell 403-8980

1PM - 4PM **Silversmithing**
Monitor - Giac D'Aquisto 207-6219

6PM - 9PM **Silversmithing**
Monitor - Bill Cascio 638-8144

6PM - 9PM **Cabbing**
Monitor - Tom Tuten 803-260-5423

Fridays

9AM - Noon **Cabbing****
Monitor - David Schulte 954-8554

9AM—Noon **Silversmithing**
Monitor - Kim Knebel 873-8990

1PM - 4PM **Silversmithing**
Monitor - Lou Ackerman 290-6968

1PM - 4PM **Cabbing**
Monitor - Pete Valentine, 208-409-7910

Saturdays

9AM - 2PM **Silversmithing**
Monitor - James Germaine, 288-0135

9AM - 2PM **Cabbing**
Monitor - Ron Bryan 619-495-7967

Casting Class

Monitor - Chuck Lundstrom 241-9262

Investing second Saturday of every month 12 - 3

Casting pour third Saturday of every month 3PM until finished.

Sundays

9AM - Noon **Rock Sawing**
Monitor - Mark Gibson 297-4412

10AM - 3PM **Silversmithing Lab**
Monitor - Giac D'Aquisto 207-6219

10AM - 2PM **Cabbing**
Monitor - Gloria Jean Shevanaquet 369-7225

2PM - 5PM **Cabbing**
Monitor - Malcolm Currie

• **INSTRUCTION AS AVAILABLE**

** **FIRST TWO MON/FRI OF EVERY MONTH IS CAB-
OCHON CLASS, WHILE THE OTHERS ARE OPEN
LAB**

Old Pueblo Lapidary Club
 (Cutting Remarks - March 2020)
 3118 N. Dale
 Tucson, AZ 85712
 (520) 323-9154

OPLC Membership Application
Complete form can be downloaded at: lapidaryclub.org/join_us.shtml

Name1 _____ Name 2 _____ Date _____

Local Address _____

City _____ State ____ Zip Code _____ Phone number (____) _____

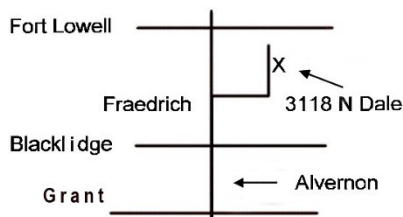
Email address _____ Summer Dates: From _____ To _____

Summer Address _____

City _____ State _____ Zip Code _____

Type of membership:	<u>1st Quarter</u>	<u>2nd Quarter</u>	<u>3rd Quarter</u>	<u>4th Quarter</u>	<u>Annual Renewals</u>
Single Member	\$30.00	\$23.00	\$16.00	\$11.00	\$25.00
Couple (same address)	\$40.00	\$30.00	\$23.00	\$16.00	\$30.00
Junior	\$14.50	\$11.00	\$9.00	\$6.00	\$12.00

Mail to: Membership Chairperson, Old Pueblo Lapidary Club, 3118 N. Dale, Tucson, AZ 85712



The Business Meetings are held on the 2nd Saturday of each month. A pre-meeting social hour (except for the December meeting) is at 8:00 a.m., followed by an educational program, and ends with the monthly meeting. Visitors are most welcome.