

“CUTTING REMARKS”

The Official Publication of the Old Pueblo Lapidary Club
520-323-9154

Officers

President - Bill Carmody 760-8598
Vice President - Bob O'Donnell 886-0384
Secretary - Jenny Coniglio 546-3684
Treasurer - Melinda Thompson 529-0864

Board of Directors

2009 - 2009 Dave Witwer 219-0942
2008 - 2009 Pete Peterson 886-9021
2008 - 2009 Merlyn Hiller 296-4469
2009 - 2010 Skip Barkley 546-1651
2009 - 2010 Ted Rupp 743-8012
2009 - 2009 Ron Davidson 749-3157 (Advisor)

Membership Co-Chairpersons

Wayne Klement 954-6298
Donna Pugh 299-1535

Please join us on July 11th
for the next monthly
meeting. Optional social
hour begins at 8:00 AM
followed by the educational
program at 9:00am followed
by the meeting. Visitors are
always welcome.



Articles or news to be included in the *Cutting Remarks* should be emailed to your Editor, Wayne Klement (wayneklem@aol.com), or feel free to call him at 520-954-6298. Submission deadline is the 25th of each month. Thanks!

THE PREZ SEZ by Bill Carmody



“In the summertime when all the trees and leaves are green and the red bird sings.” This sounded good when Roger Miller sang it but he neglected to mention 104 degrees and mug-you-the-minute-you-step-out-the-door humidity – I guess he wasn’t singing about Tucson in July. If July is going to be like June ended, it’ll be a corker this year. (I am trying to multi-task while writing my comments this month. I got a turn table that connects directly into the computer. So, I am putting my old LP’s onto CD’s. You guessed. I just did Roger Miller’s “Golden Hits”. I love the line: “Sugar is sweet and so is maple syrup.”) – My, that sure looks like a digression. – I promise; no more digressions.

Last week I got a call from Mathew Wenger to pick up a donation from the U of A’s Flandrau Science Center. I gave Danny Harmsen a call and off we went with thoughts of sugar plums dancing in our heads. We speculated that maybe they didn’t have room for all of the seven-million-dollar

Hubert C. de Monmonier collection and wanted to give us some. When we got there, the items to be donated looked rather pedestrian compared to the de Monmonier collection. Seriously, we did get about eight boxes of agates, jade, etc. for which we are grateful. Mathew said they are starting an outreach program to bring mineral education and awareness to grade schools. They have quite a few specimens available for these activities and are looking FOR opportunities. If you know of any schools looking for mineral-associated input from the University of Arizona, please call Matt at the Flandrau Center or me.

As a bonus for picking up the donation, Danny and I got to GO through their mineral collection. We were really impressed with the de Monmonier collection. The gold specimens were truly spectacular. Phelps-Dodge’s contribution will keep the Center open for two more years. After that, their future is murky.

The reason I played hooky from the June general business meeting was Donna Pugh found out about a movie in progress needing some people. Thus, I had a chance to be in the movies – as an unpaid extra. Being unpaid did nothing to deter my dreams of being discovered and on the road to fame and fortune. The movie set was the typical old western town: five or six old buildings on each side of a main street. It is called Gammon Gulch and is ten to twelve miles from I-10 on Cascabel road north of Benson.

Donna spent most of the early part of the shoot being a pretty lady walking through town and dodging rambunctious kids running wild. I started as a prospector in a tent camp on the edge of town. I heard people yelling my name from the other edge of town. Seems they needed an assayer to argue with an irate prospector. My friend, Jack, from the Gold

Cont’d on next page

UPCOMING PRESENTORS

July - Rosemont Mine

August - Meteorites by Twink Monrad

Cutting Remarks, V2009, Issue 7, July 2009. Published monthly by the Old Pueblo Lapidary Club, 3118 N. Dale, Tucson, AZ 85712. Telephone: (520) 323-9154, a non-profit organization.

.....**Prez Sez Cont'd from prior page**

Diggers Club had suggested they use me. So, Jack and I were filmed arguing about my assay results regarding his sample. It got spirited and I even kick gravel on him like a baseball manager who gets mad at an umpire. Then, Jack and I moved back up to the tent encampment for filming there. Not given any direction, he and I posed as prospectors pretending to work on our gold panning-techniques. They filmed this extensively -- must have been what they wanted.

Then, they ran a stage coach through town a couple of dozen times and all the extras walked diagonally the length of town and back again while that happened. Donna and I walked endlessly back and forth between the Town Hall and the Assay Office.

It is a very low budget movie about some girl growing up in a small western town - yada, yada.

Here are a several pictures we took before the shooting started. We couldn't have our cameras once the filming started. The weather was perfect, but you can't believe how dirty we got – dust everywhere. I guess this does stray somewhat from minerals

and lapidary. However, I did get a stone in my shoe.

As I am writing this, Billy Bob is undergoing open heart surgery -- another bypass. He was down to one artery feeding his heart and that was 80% blocked. I know we are all



wishing him well and a speedy recovery and then – more rock hounding. (An interesting aside:

Donna had mentioned to the movie people that we had friend who would be ideal for this movie: Billy Bob. They called him. He made a peg-leg from a pickax handle. They devoted quite a bit of film to him in a bar-fight scene. He did this while coming off blood thinners and waiting for the surgery.)

As you remember, I suggested taking a look at the lapidary lab with the idea of possibly expanding it or to verify that the current configuration is adequate. Well, so far zero responses have come pouring in. Don't make me threaten you with pork chops. I have only seen apathy equal to this in our selection of this Nation's politicians over the past twenty years.

This month's contest entry is charms. Carl, this is your big chance since you are so full of it.

Remember, always practice safe extra-ing.

Bill Carmody



JUNE MEETING MINUTES By Jenny Coniglio

Ed Note: June's meeting minutes were taken by Diana Hara, who was filling in for Jenny. Thanks Diana!



The meeting was called to order by Bob O'Donnell at 9:55 am. A quorum was met and May's meeting minutes were passed.

The topic of July's educational program will be the Rosemont Mine.

New members in attendance: Carol Kundt from Rio Rico and John Kundt from Green Valley. Both are rockhounds looking to do something with their loot! They are also interested in field trips. Patricia Ferguson from Picture Rocks is interesting in metal smithing and Rick Lintner specializes in opals and jewelry repair.

Bob gave the group a status on Billy Bob Riley. He is currently at Tucson Heart Hospital with an 80% blockage. He is in room 229 at this writing and can be reached on his cell phone at 282-2517. Billy Bob, our thoughts are with you.

OLD BUSINESS

Bob asked for feedback on the electronic delivery of the June newsletter. No one had any issues receiving it.

NEW BUSINESS

Jean Barkley presented the members with a new opportunity to showcase and sell their work. Bill Wright from Academy

Village in the southeast Rincon Valley called the Club. He is in the lapidary arts and found the Club on the internet. He called and left a message asking if we would like to showcase and/or sell our work at their community gallery. Skip and Jean went to see the gallery. We have been offered the use of a display case that has five shelves and is six feet tall by 18 inches wide by 12 inches deep. Jean has put a sign up sheet on the board in the clubhouse for anyone interested in putting their work in the gallery. One caveat is that the community does NOT have insurance to cover your work if anything is stolen. However, there has never been anything stolen and there is a lock on the display case. The gallery is located in the community center. They also ask that Club members provide their own display items. Jean will plan a meeting with the gallery board members and show them the pieces we want to display or sell. The board wants to approve the pieces before they go in the case. Jean said they did not talk about how any money from sales would be handled, any consignment percentages, or a time frame for how long we could display our work. The gallery website is at: www.theacademyvillage.com. If you have any questions, please

give Jean a call.

Wolfgang Mueller asked the Club for feedback on what sort of things we would like to learn in his class. He suggested the basics of what you look for during field trips and maybe the top minerals found in Arizona. He also asked for suggestions on where to go for field trips. The class is tentatively scheduled to be on a Saturday after one of our general meetings and will be in the September/October time frame.

Melinda Thompson asked instructors and lab monitors for shop wish lists. The Board needs them by August in order to make purchases before the year is up.

Bob mentioned that Ron Davidson and Ted Rupp are planning to paint the shop floors in July. If you would like to help, please contact one of them.

Bob also told the members that the board is considering expanding the lapidary shop. Please contact a board member is you have an idea to consider.

Bill Carmody donated 12 new chairs to the shop.

The meeting adjourned at 10:15am

Jean Barkley won the door prize. Congratulations, Jean!

OPLC Members' Lapidary Art on Display in Art Gallery

Bill Wright, a resident of Academy Village, a retirement community in Rincon Valley, southeast of Tucson, contacted Jean Barkley and offered to have our members display/sell our lapidary artwork in the showcase of an Art Gallery in their Community Center. Mr. Wright enjoys lapidary himself and found OPLC on our website! Academy Village is a community designed to provide continuing education, as well as social and cultural programs to its residents. (Check out their website at: www.TheAcademyVillage.com.)

Information was provided at the June OPLC meeting and several members signed up for the display. On Thursday 6/26/09, 8 members brought their lapidary art and filled the showcase with their work. Mr. Wright's wife, Maureen, is on the Art Gallery Board and is coordinating the display.

This is an exciting opportunity for OPLC members to show off their talents as well as make some money! The current display is scheduled to be in place for at least 6 weeks. After that period it is expected that the display case will continue to be available for OPLC. At that time other interested members will be able to display their pieces. Additionally, as pieces

sell before the 6 weeks, room may be made available for other OPLC artists.

The gallery will host a reception for the lapidary showing on a Friday, July 10, 5-7p.m. at the Academy Village Community Center at 13701 Old Spanish Trail. It's between the major streets of 22nd St. and Camino Loma Alta. OPLC members are welcome to attend. It will feature hors d'oeuvres, wine and soft drinks. Displaying artists and all OPLC members will be invited.

Pictured in the photo are members who are currently displaying their work along with the Wrights.



Display case with our members' art work



left to right are: Paul Head, Jean Barkley, Maureen Wright, Jenny Coniglio, Diana Hara, Diana Mueller, Wolfgang Mueller, Bill Wright, and Janelle Cortright, (not pictured is Raymond Brown who also contributed his silver work).

JULY BIRTHSTONE : RUBY

Like a perfect red rose, the Ruby's rich color speaks of love and passion. Called the "Rajnapura" or King of Gems by ancient Hindus, July's birthstone is among the most highly prized of gems throughout history. The Ruby was considered to have magical powers, and was worn by royalty as a talisman against evil. It was thought to grow darker when peril was imminent, and to return to its original color once danger was past - provided it was in the hands of its rightful owner!

Rubies were thought to represent heat and power. Ancient tribes used the gem as bullets for blowguns, and it was said that a pot of water would boil instantly if a Ruby was tossed into it. Ground to powder and placed on the

tongue, this crystal was used as a cure for indigestion.

The word Ruby comes from the Latin "ruber," meaning red. It is a variety of the mineral Corundum, and is found as crystals within metamorphic rock. Corundum is the second hardest mineral, after Diamond. It comes in a variety of colors, and is considered a Sapphire in any color except red, which is designated as a Ruby. Rubies range in hue from an orangey red to a purplish red, but the most prized gems are a true red in color. Large sized Rubies are very rare and valuable.

The history of Ruby mining dates back more than 2,500 years ago. The most beautiful crystals are thought to be from

Burma, but quality Rubies are also found in India, Sri Lanka, Australia, Kenya, Tanzania, Afghanistan, Pakistan, and the United States.

It has been said that the Ruby's red glow comes from an internal flame that cannot be extinguished, making a gift of this stone symbolic of everlasting love. With its hardness and durability, it is a perfect engagement gem. And if worn on the left hand, ancient lore has it that the Ruby will bring good fortune to its wearer, too!



Source: 2003-2008 About Birthstones.com

TUMBLING HINTS for APACHE TEARS

We have heard of lots of personal "recipes" when attempting to polish "Apache tears". Here are some methods you may want to try.

- In steps 3 & 4, add corn syrup to the load to slow down the action. This thickens the slurry and will keep the Apache tears from scratching themselves.
- Use cerium oxide as a polish, and use it with oatmeal. Let it go for several weeks. Do NOT add water in this method. Polish dry.
- Use a vibrating polisher. These type polishers do not have the harsh action a rotary polisher has.

Source <http://www.rocks4u.com>

(Ed. Note: I found that crushed walnut shells, purchased at gun shops, will also work as a buffer to keep tears from scratching or chipping.)

Rockhounds!

Copper City Rock Shop

566 Ash St.
Globe, AZ 85501
928-425-7885
Open 9 to 5, Tuesday-Saturday

10% off

Well worth
the trip!

We have something for everyone. Cabochons, slabs, cutting rough, minerals, fossils, carving rough, metaphysical goods, tumbling grit, gift items. Visit our web site for just a taste of what we have. Then come up and see it all. Bring this ad and get 10% off.

E-mail: mediz@cablone.net

Ad Expires
December 2009



Beta Diamond Products, Inc.
www.betadiamond.com
Ph: (714) 777-7144
Fax: (714) 714 693-9351
E-mail: info@betadiamond.com

BETA IS BETTER!

Beta Diamond Products, Inc has been providing diamond abrasive consumables for lapping and polishing since 1986, specializing in diamond powder, compound, spray, aluminum oxide (linde A, B, C), cerium oxide, silicon, carbide, boron carbide, discs, and more. We supply industry, government, universities, faceters and hobbyists with excellent quality, delivery, service and price.



Ad Expires June 2010

TEN COMMANDMENTS OF USING ACID

1. Never add acid to water.
2. Always keep a container of water nearby for neutralizing solutions in case of a spill.
3. Never use acid with bleach.
4. Always use acids in a well-ventilated area.
5. Always use inferior specimens for experimentation.
6. Always treat a spill as if it is the worst acid you are using.
7. Always wear protective clothing and use proper equipment.
8. Always neutralize acid solutions before disposing of them.
9. Always use and store acids carefully (well labeled and out of reach of children).
10. Always practice common sense.

Rockhound Rambling Volume 55, No. 5, May 2009 via From Del Air Bulletin date unknown via Moroks January, 2001

SALE STILL GOING ON !!

ROCKS & ROCK SLABS FOR SALE

Ron Davidson - 9219 E. Kayenta
 Agates, Petrified Wood, Picture Jasper, Thunder Eggs, Obsidian, Geodes, Slabs, and much, much, more. Call 749-3157 to arrange for an appointment to preview items desired.

Ad expires Feb 2010

DONATION

The Club has received boxes of various kinds of agate, jasper and jade from the University of Arizona, Flandrau Science Center. These rocks were excess to their program. Weight wise, there was approximately 150 lbs.

DONATIONS

You may contact one of the following individuals if you are interested in making a donation (rocks, equipment, etc.) to the Old Pueblo Lapidary Club. Please call: Bill Carmody at 760-8598 or Dan Harmsen at 721-8452.

Rate Schedule for Advertisements - - - Ad Sizes & Prices

1/8 of a page -
 2" H by 3 1/2" W
 \$36.00 per year
 \$18.00 per half year
 \$3.00 per month

1/4 of a vertical page -
 4 1/2" H by 3 1/2" W
 \$48.00 per year
 \$24.00 per half year
 \$4.00 per month

1/4 of horizontal page -
 2" H by 7 1/4" W
 \$48.00 per year
 \$24.00 per half year
 \$4.00 per month

1/2 page - 4 1/2" H by 7 1/4" W
 \$96.00 per year
 \$8.00 per month

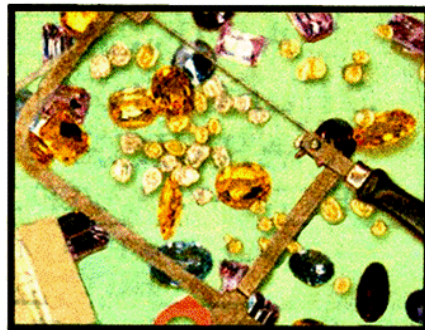
Full page - 9 1/2" H by 7 1/4" W
 \$168.00 per year
 \$14.00 per month

JEWELERS SUPPLIES

GOLD ★ SILVER ★ SHEET ★ WIRE

SINCE 1967

For The Professional And Hobbyist



Tuesday - Friday 9-5
Saturday 10-2
Closed Sunday & Monday

- SILVERSMITH TOOLS
- LAPIDARY EQUIPMENT
- FOREDOM TOOLS
- STONES • BEADS
- FINDINGS • CHAINS
- HOW TO BOOKS



882-8750

Starr Gems, Inc.

www.silversupplies.com

220 W. DRACHMAN

SHOWCASES & JEWELRY
 DISPLAY ACCESSORIES

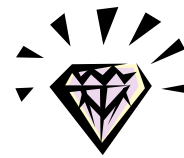
Ad Expires November 2009

MONEY SAVING DISCOUNTS

- **DAH Rock Shop** - 10% on most items. See ad on page 10 of this newsletter. 520-323-0781
- **Colorwright** - Amount of discount depends on item(s) being purchased. 520-623-3874
- **Jay's of Tucson** - 10% discount. 520-323-1123
- **Jed's Rock Shop** - 20% on all items. 520-882-6044
- **Copper City Rock Shop** - Bring in ad from page 7 of this newsletter and get 10% off on all purchases. 928-425-7885
- **Kent's Tools** - 10% 520-624-8098
- **Tucson Mineral & Gem World** - 10% 520-883-0682

WELCOME NEW MEMBERS

Lynn Balderston
John Ferguson
Patricia Ferguson
John Garcia
Ian Haubert
John Kundt
Carol Kundt



ADVANCED FACETOR'S CORNER

The July question of the month: Synthetics are imitations? True or False?

Come to the July meeting to hear the answer.

The June question of the month: Color can be relied upon to 'tell stones apart' True or False?

The answer: FALSE



DON'T FORGET

Please don't forget to bring in **YOUR** aluminum cans to the Club for recycling. Your contribution would be greatly appreciated to help add \$'s to the Club's treasury.

Thanks !

MONTHLY JEWELRY CONTESTS

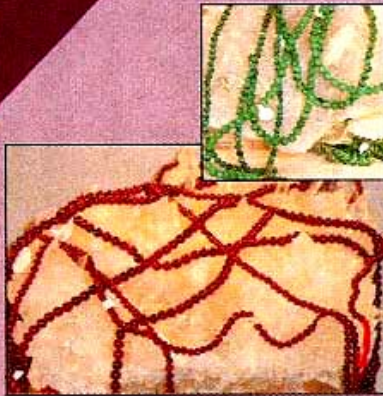
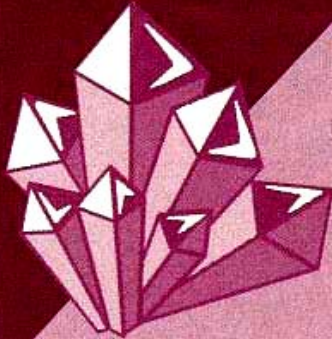
In order for members to better plan for future monthly contests, here is the schedule for each category by month:

January - Bolo Tie	May - Brooch	August - Faceted Stone	November - Bracelet
March - Belt Buckle	June - Cabochon	September - Chain	
April - Necklace	July - Charm	October - Pendent	

There were no entries in June.

DAH ROCK SHOP

- Crystals
- Fossils
- Minerals
- Meteorites
- Faceted Stones
- Cabochons
- Turquoise
- Tumbled Stones
- Bookends
- Eggs & Spheres



YOUR BEAD STOP

104
DIFFERENT
VARIETIES
OF SEMI-PRECIOUS
STONE BEADS

All Beads Picked
by Resident Graduate
Gemologist

Huge Selection of
Sterling Silver Findings

Turquoise from
Around the World

3401 N. Dodge, 3 blocks N. of Ft. Lowell (520) 323-0781

**LAPIDARY EQUIPMENT - STERLING SILVER JEWELRY - BOOKS - SLABS -
ROUGH STONES - BEADING SUPPLIES - SILVERSMITH TOOLS**

TUES - SAT 9:30 - 5:30

(CLOSED SUN & MON)

3401 NORTH DODGE BLVD

(3 BLOCKS NORTH OF FT. LOWELL)

**OPLC MEMBERS RECEIVE 10% OFF ON ALL MERCHANDISE EXCEPT
SPECIALS.**

STERLING SILVER WIRES AND SHEET RECEIVE THE NEXT PRICE BREAK

Ad Expires March 2010

WEEKLY WORKSHOP SCHEDULE Phone 323-9154

<p><u>Mondays 1 - 4 PM</u></p> <p>Faceting Guild - Fee charged. Experienced facetors only. Contact Paul Head 296-0331</p> <p>Silversmith Lab - Fee charged. Contact Lou Akerman 290-6968 (Note: Lou will be going North June 7 and will return September 8)</p> <p><u>Mondays 6 - 9 PM</u></p> <p>Beginning Faceting - Class fee charged. Contact Earl Zoeller 886-3518</p> <p><u>Tuesdays 9 AM – Noon</u></p> <p>Open Cabbng - Fee charged. Contact Ron Davidson 749-3157</p> <p>Silversmithing Lab - Fee charged. Contact Ron Davidson 749-3157</p> <p><u>Tuesdays Rock Sawing</u></p> <p>8 - 10AM Dave Arens 749-2413 10AM - 1PM Jim Baker 886-2126</p> <p><u>Wednesdays 1– 4 PM</u></p> <p>This lab is closed due to lack of participation. It may reopen in the Fall....stay tuned.</p>	<p><u>Wednesdays 6 - 9PM</u></p> <p>Beginning Casting - Class fee charged. Contact Chuck Lundstrom 577-6446</p> <p>Open Cabbng - Fee charged. Contact Keith Haubert 888-8719</p> <p><u>Thursdays</u></p> <p>10AM - 1PM Rock Sawing - Fee Charged Monitor - Jim Baker 886-2126 Please call to confirm Jim's availability</p> <p>6 - 9PM Open Cabbng & Silversmithing Monitor - Ron Davidson 749-3157</p> <p><u>Fridays 9 AM - Noon</u></p> <p>Open Cabochon Lab - Fee charged. Contact Dan Harmsen 721-8452</p> <p>Note: This lab will be closed after May 29th for the summer. Next Open Lab will be on October 2.</p> <p><u>Saturdays 10am - 3pm</u></p> <p>Silversmithing - Ron Davidson 749-3157 Cabbng - Ron Davidson 749-3157 Rock Sawing - Jim Griffin / Ron Davidson</p>
--	---

COMMITTEES

<p><u>ADVERTISING</u></p> <p>Jean Barkley 546-1651</p> <p><u>BUILDINGS, GROUNDS & EQUIPMENT</u></p> <p>Ron Davidson 749-3157</p> <p><u>CLASSES & PROGRAMS</u></p> <p>Bob O'Donnell 886-0384</p> <p><u>CLUB HISTORIAN</u></p> <p>Sylvia Czayo 297-8607</p> <p><u>FIELD TRIPS</u></p> <p>Wolfgang Mueller 896-3197</p> <p><u>JUNIOR EDUCATION</u></p> <p>Gretchen Arnaiz 747-1511 Sheila Powell 578-1976</p>	<p><u>KITCHEN</u></p> <p>General Membership</p> <p><u>LIBRARIAN</u></p> <p>Susette Flemings 741-2275</p> <p><u>MEMBERSHIP</u></p> <p>Wayne Klement 954-6298 Donna Pugh 299-1535</p> <p><u>SECURITY</u></p> <p>Ron Davidson 749-3157</p> <p><u>SILENT AUCTION</u></p> <p>Dan Harmsen 721-8452</p>
--	--

Old Pueblo Lapidary Club
 (Cutting Remarks - July 2009)
 3118 N. Dale
 Tucson, AZ 85712
 (520) 323-9154

OPLC Membership Application - Please Print

Name1 _____ Name 2 _____ Date _____

Local Address _____

City _____ State ____ Zip Code _____ Phone number (____) _____

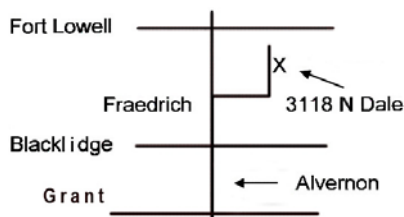
Email address _____ Summer Dates: From _____ To _____

Summer Address _____

City _____ State _____ Zip Code _____

Type of membership:	<u>1st Quarter</u>	<u>2nd Quarter</u>	<u>3rd Quarter</u>	<u>4th Quarter</u>	<u>Annual Renewals</u>
Single Member	\$20.00	\$15.00	\$11.00	\$9.00	\$15.00
Couple (same address)	\$30.00	\$20.00	\$15.00	\$10.00	\$20.00
Junior	\$7.50	\$7.50	\$7.50	\$7.50	\$7.50

Mail to: Membership Chairperson, Old Pueblo Lapidary Club, 3118 N. Dale, Tucson, AZ 85712



The Business Meetings are held on the 2nd Saturday of each month. A pre-meeting social hour (except for the December meeting) is at 8:00 a.m., followed by an educational program, and ends with the monthly meeting. Visitors are most welcome.