

“CUTTING REMARKS”

The Official Publication of the Old Pueblo Lapidary Club
520-323-9154

Officers

President - John Poole 777-5588

Vice President - Jean Barkley 546-1651

Secretary - Twink Monrad 297-9454

Treasurer - Mark Gibson 297-4412

Board of Directors

2013 - 2013 Ted Rupp 743-8012

2013 - 2014 Jim Baker 886-2126

2013 - 2014 Skip Barkley 546-1651

2012 - 2013 Merlyn Hiller 296-4469

2012 - 2013 Pat McMullin 818-2455

2013 - 2013 Pete Peterson 886-9021 (Advisor)

Membership Chairperson

Wayne Klement 954-6298

Please join us
December 14th at
11:00am for the
monthly meeting,
followed by our annual
Christmas Brunch!
Visitors are always
welcome.



Articles or news to be included in the *Cutting Remarks* should be emailed to your Editor, Mike DeMeritt (silverlininggemstones@gmail.com), or feel free to call him at 520-203-8430. Submission deadline is the 20th of each month. Thanks!

THE PREZ SEZ by John Poole



December is here, welcoming cooler weather and outdoor activities. The Training Center is getting busier with more of our Northern friends returning. Welcome back!

I am a little disappointed with the lack of sign-ups for our fall clean-up. But I have complete confidence in the Chair of that committee, Pete Peterson, to get it done. And if you haven't signed up for the Pot Luck Christmas lunch, please give Pat McMullen a call or sign up in the Clubhouse kitchen. OPLC will be providing the ham and turkey, but everything else is, well, "pot luck"!

Remember, the December meeting starts at 11:00 AM, with dining around noon. We'll have the election of officers for next year, and I'll present a proposal recommended by the Board regarding roof repairs. Don't forget, wear your club badge and get a free raffle ticket with purchase of a raffle ticket.

If you can't make the December meeting, have yourself a great Christmas with your family and friends!

-John

*Everything has beauty,
But not everyone sees it.*
- Confucius

WELCOME NEW MEMBERS



**Rick Ferguson
Brett Heck
Lourdes Heck
Dan Heitmann
Faith Heitmann**

**Denise Perry
Rick Perry
Christina Ryebush
Ann Taylor
Larry Taylor**

PRIOR MONTH'S MEETING MINUTES... Twink Monrad, Secretary



OPLC MONTHLY MEETING 11.9.13

After a very interesting CD showing gorgeous photographs of Thundereggs from all over the world, the meeting was brought to order by President John Poole.

John thanked Paul Gonzalez and Ruby for furnishing the refreshments for the meeting.

A motion was passed to approve the October minutes.

One guest and five new members introduced themselves.

Treasurer's report: Mark Gibson gave a financial report which will be filed for audit. He said that our Silent Auction was very successful and over \$6000 was added to our treasury. Danny Harmsen was thanked for another great auction and Pat McMullen and his kitchen crew did a superb job once again.

Clubhouse report: John said that the southwest corner of the clubhouse roof needs to be repaired and that estimates and plan of action will be presented at our December meeting.

CHRISTMAS LUNCH MEETING: Pat McMullen has a sign-up sheet in the kitchen and would like members to sign up to bring side dishes so he will have an idea of what will be brought. The Club furnishes turkey, gravy and ham.

CLUBHOUSE SEMI ANNUAL CLEAN-UP: The date will be Saturday November 30th at 9 AM. At least 10 members are needed to help clean up the clubhouse and classrooms. Pete Peterson and Rob Gourley will head up the project and there is a sign-up sheet in the kitchen. Donuts will be furnished in the morning and pizza after the work is done.

Jean Barkley: New OPLC business cards have

been ordered. They are in color and feature a map on the back of the cards.

Jean asked for some volunteers to help her keep the bulletin boards in the meeting room up to date.

Skip Barkley: Elections are in December and the slate was in the November newsletter. Anyone can be nominated from the floor at the December meeting.

John Pool thanked the monitors and the others who keep things going in the workshops. The rooms and machinery are looking great.

Bobo O'Donnell will be trying to arrange a rock trip in the near future.

Membership: we have well over 350 members.

Security: No problems

REFRESHMENTS FOR MEETINGS: Norma Lackow needs volunteers starting in January. Up to \$30 can be reimbursed to whoever brings the food. Please call Norma at 742-7561.

Sharlene Baker requested that we take a look at the parking lot lighting. When leaving the class that she and another member teach at night, she felt that the lighting should be improved. The Board will look at the situation and perhaps install a timer switch or take other action.

After the door prize drawing, which was won by Pete Peterson, the business meeting was adjourned and the raffle tickets were drawn. We adjourned at 10:30.

Twink Monrad, Secretary

Maya Jade - The revival of a gem revered by royalty

Lecture presentation by

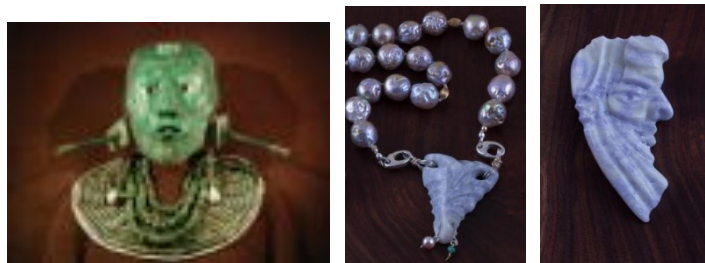
Helen Serras-Herman, MFA, FGA

Gem Art Center

2014 AGTA Tucson GemFair Seminars

February 6, 2014, 1:00pm

Tucson Convention Center, Maricopa room



OPLC member, award-winning gem artist Helen Serras-Herman will be giving a lecture presentation during the 2014 AGTA seminars, titled ***“Maya Jade- The revival of a gem revered by royalty”***.

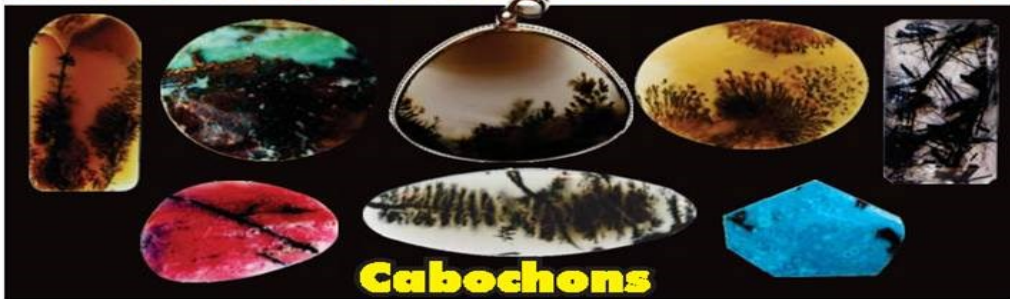
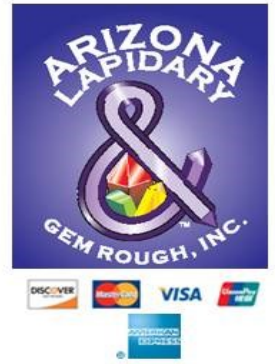
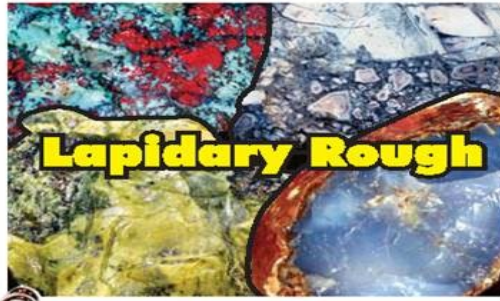
Helen will discuss how jade was revered in the Maya world, an ancient culture that flourished in the first millennium AD in Mexico and Central America, and show intricate jade carvings from her visits to several archaeological museums and sites in Mexico and Guatemala and the *British Museum* in London.

The sources for Mesoamerican jade were lost for five centuries but today we know the exact location of many of the ancient mines, and a magnificent variety of jadeite colors is now mined in Guatemala. Helen will share the amazing story of the jade rediscovery that spans over a century, involving many American scientists enamored with the jade.

During this presentation you can view behind-the-scenes of the machinery and artists carving jade at the *Jades S.A* factory in Antigua, Guatemala. Paying tribute to the people that motivated her to appreciate Guatemalan jade, Helen will share her inspiration for her own *Maya Jade Collection* artwork.

The *Maya Jade Collection* features unique, carved centerpiece pendants in the rare and beautiful *Lavender Jade* from Guatemala designed with natural-color baroque pearls, rare *Sugarcane Emeralds* from Brazil, and tanzanite beads, creating an astonishing pastel tone combination. The collection also includes necklaces with large *Mayan Foliage Jade* beads designed with copper chains.

Helen’s newest pieces will premiere at the 2014 *Tucson AGTA GemFair*™ (Booth #1621, Designers) and the *Tucson Gem & Mineral Show*™ (TGMS, Booth #1606-1608 in the Gem Hall).



*Our Annual
Dragon's Hoard Sale*

All Week: Dec. 1 – Dec. 7

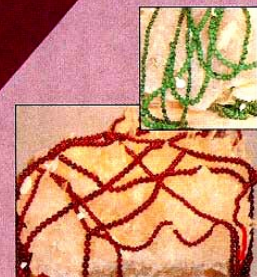
4699 E Pima St.
Northwest corner of Pima & Swan – look for the ore cart!
9:30 am – 5:30 pm
Tel: 520-235-3660

50% OFF*
Everything

*Excluding jewelry pieces and "red dot" items! Club discounts do not apply to 50% off items.

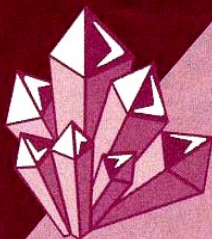
DAH ROCK SHOP

- Crystals
- Fossils
- Minerals
- Meteorites
- Faceted Stones
- Cabochons
- Turquoise
- Tumbled Stones
- Bookends
- Eggs & Spheres



YOUR BEAD STOP
104
DIFFERENT
VARIETIES
OF SEMI-PRECIOUS
STONE BEADS

All Beads Picked
by Resident Graduate
Gemologist
Huge Selection of
Sterling Silver Findings
Turquoise from
Around the World



3401 N. Dodge, 3 blocks N. of Ft. Lowell (520) 323-0781

**LAPIDARY EQUIPMENT -
STERLING SILVER JEWELRY -
BOOKS - SLABS - ROUGH
STONES - BEADING SUPPLIES -
SILVERSMITH TOOLS**

**HOURS: (TUES - SAT 9:30 - 5:30
(CLOSED SUN & MON))**

**OPLC MEMBERS RECEIVE 10%
OFF ON ALL MERCHANDISE
EXCEPT SPECIALS. \$10 MINIMUM
PURCHASE.**

**STERLING SILVER WIRES AND
SHEET RECEIVE THE NEXT PRICE
BREAK.**

Ad Expires Sept 2014

Allen's Treasure House

Lapidary supplies, minerals, beads, watch batteries, maps, prospecting tools, much more.

www.allens-treasure-house.com

4313 E Grant Road (near Columbus); Tucson AZ 85712; (520) 326-5550; mail@allens-treasure-house.com

Call for hours.

Ad Expires Apr 2014



Beta Diamond Products, Inc.
www.betadiamond.com
 Ph: (714) 777-7144
 Fax: (714) 714 693-9351
 E-mail: info@betadiamond.com

BETA IS BETTER!

Beta Diamond Products, Inc has been providing diamond abrasive consumables for lapping and polishing since 1986, specializing in diamond powder, compound, spray, aluminum oxide (linde A, B, C), cerium oxide, silicon, carbide, boron carbide, discs, and more. We supply industry, government, universities, faceters and hobbyists with excellent quality, delivery, service and price.



Ad Expires Apr 2014

*When we live in awareness,
 we can see miracles everywhere.*

- Thich Nhat Hann

JEWELERS SUPPLIES

GOLD ★ SILVER ★ SHEET ★ WIRE

SINCE 1967

For The Professional And Hobbyist



882-8750

Starr Gems, Inc.
www.silversupplies.com

Tuesday - Friday 9-5

Saturday 10-2

Closed Sunday & Monday



- SILVERSMITH TOOLS
- LAPIDARY EQUIPMENT
- FOREDOM TOOLS
- STONES • BEADS
- FINDINGS • CHAINS
- HOW TO BOOKS

220 W. DRACHMAN

SHOWCASES & JEWELRY
 DISPLAY ACCESSORIES

MONEY SAVING DISCOUNTS

- **DAH Rock Shop** - 10% on most items, \$10 minimum purchase. 520-323-0781
3401 Dodge Blvd, Tucson
- **Colorwright** - 520-623-3874 Web address: <http://www.color-wright.com/>, **MAILING ADDRESS:** 1520 S Desert Crest Dr., Tucson, AZ 85713. Amount of discount depends on item(s) being purchased.
- **Jay's of Tucson** - 30% discount excluding orange tag items, sterling silver sheet and wire. 520-323-1123 (corner of Speedway & Swan)
4627 E Speedway, Tucson
- **Jed's Rock Shop** - 20% on all items. 520-882-6044 - **6275 N Sandario Rd, Tucson**
- **Copper City Rock Shop** - See ad in this issue. 10% discount with ad. 928-425-7885
566 Ash, Globe, AZ 85501
- **Kent's Tools** - 10% 520-624-8098 - **133 E Grant Road, Tucson**
- **Tucson Mineral & Gem World** - 10% 520-883-0682 Web address: www.tucsonmineral.com **2801 South Kinney Road, Tucson**
- **Arizona Lapidary** - 10% discount for OPLC members. See ad in this issue. 520-399-6641
4699 E Pima St, Tucson

DON'T FORGET

Please don't forget to continue to bring in **YOUR** (or anyone else's for that matter) aluminum cans to the Club for recycling. Your contribution would be greatly appreciated to help add \$'s to the Club's treasury. **Thanks!**

Rate Schedule for Advertisements - - - Ad Sizes & Prices

1/8 of a page -
2" H by 3 1/2" W
\$36.00 per year
\$18.00 per half year
\$3.00 per month

1/4 of a vertical page -
4 1/2" H by 3 1/2" W
\$48.00 per year
\$24.00 per half year
\$4.00 per month

1/4 of horizontal page -
2" H by 7 1/4" W
\$48.00 per year
\$24.00 per half year
\$4.00 per month

1/2 page - 4 1/2" H by 7 1/4" W
\$96.00 per year
\$8.00 per month

Full page - 9 1/2" H by 7 1/4" W
\$168.00 per year
\$14.00 per month

Fine Minerals

Lapidary Rough

Cabochons

ARIZONA LAPIDARY & GEM ROUGH, INC.

4699 East Pima Street, Tucson, AZ 85715
1-520-399-6641
1-888-627-4481
Hours:
 Tuesday, Thursday, Friday 9:30-5:30
 or by appointment

Ad Expires Feb 2014

COMMITTEES

ADVERTISING

Melinda Thompson 730-3082

BUILDINGS, GROUNDS & EQUIPMENT

Dave Arens 749-2413

CLASSES & PROGRAMS

Jean Barkley 546-1651

FIELD TRIPS (COMMITTEE)

Jerry Behn 761-1924

Bob O'Donnell 886-0384 (Chairperson)

Shiela Powell 578-1976

Al Romey 325-7263

HISTORIAN

Twink Monrad 297-9454

JUNIOR EDUCATION

Gretchen Arnaiz 747-1511

Sheila Powell 578-1976

KITCHEN

General Membership

LIBRARIAN

Twink Monrad 297-9454

MEMBERSHIP

Wayne Klement 954-6298

SECURITY

John Poole 777-5588

SILENT AUCTION

Dan Harmsen 721-8452

WEEKLY WORKSHOP SCHEDULE Phone 323-9154

Mondays

9AM - 12PM **Cabbing**

Monitor - Gloria Jean Dana

1PM - 4PM **Faceting Guild** (Exp. Facetors Only)

Monitor - Paul Head 296-0331

1PM - 4PM **Silversmith Lab**

Monitor - Lou Akerman 290-6968

6PM - 9PM **Beginning Faceting**

Monitor - Earl Zoeller 886-3518

Tuesdays

9AM - Noon **Cabbing***

Monitor - Mike DeMeritt 203-8430

9AM - Noon **Silversmithing Lab**

Monitor - John Poole 777-5588

10AM - 1PM **Rock Sawing**

Monitor - Jim Baker 886-2126

1PM - 4PM **Beginning Faceting**

Monitor - Mike DeMeritt 203-8430

Wednesdays

6PM - 9PM **Beginning Casting**

Monitor - Chuck Lundstrom 577-6446

6PM - 9PM **Cabbing**

Monitor - Keith Haubert 784-8283

6PM - 9PM **Silversmithing Lab**

Monitor - Bill Cascio 638-8144

Thursdays

10AM - 1PM **Rock Sawing**

(BY APPOINTMENT ONLY)

Monitor - Jim Baker 886-2126

Fridays

9AM - 12PM **Cabbing***

Monitor - Mike DeMeritt 203-8430

Saturdays

8AM - 12PM **Rock Sawing**

Monitor - Jim Griffin

10AM - 3PM **Silversmithing**

Monitor - Terry Cox 296-4949

10AM - 3PM **Cabbing***

Monitor - Ron Davidson 749-3157

*** INSTRUCTION PROVIDED AS AVAILABLE,
MAY REQUIRE DOUBLE-PUNCHED
HOURS**



Jean Knuth: tumbling media, banded rhyolite, various agates & jaspers, findings;

Phil Babcock: jaspers & agates; **Abe Lackow:** engraving tools, slabs, wax molds, shells;

Ted Rupp: rock; **Dennis Murphy:** tri-yolked geode

To donate to OPLC, just see or contact Dan Harmsen. at 721-8452.

Old Pueblo Lapidary Club
 (Cutting Remarks - December 2013)
 3118 N. Dale
 Tucson, AZ 85712
 (520) 323-9154

OPLC Membership Application - Please Print

Name1 _____ Name 2 _____ Date _____

Local Address _____

City _____ State ____ Zip Code _____ Phone number (____) _____

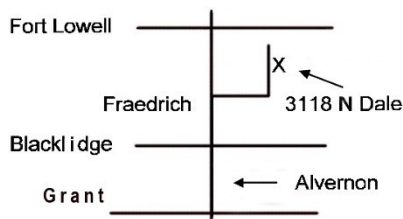
Email address _____ Summer Dates: From _____ To _____

Summer Address _____

City _____ State _____ Zip Code _____

Type of membership:	1st Quarter	2nd Quarter	3rd Quarter	4th Quarter	Annual Renewals
Single Member	\$25.00	\$20.00	\$15.00	\$10.00	\$20.00
Couple (same address)	\$35.00	\$27.00	\$22.00	\$15.00	\$25.00
Junior	\$12.50	\$10.00	\$7.50	\$5.00	\$10.00

Mail to: Membership Chairperson, Old Pueblo Lapidary Club, 3118 N. Dale, Tucson, AZ 85712



The Business Meetings are held on the 2nd Saturday of each month. A pre-meeting social hour (except for the December meeting) is at 8:00 a.m., followed by an educational program, and ends with the monthly meeting. Visitors are most welcome.