

# “CUTTING REMARKS”

The Official Publication of the Old Pueblo Lapidary Club  
520-323-9154

## Officers

President - John Poole 777-5588

Vice President - Gloria J Dana 369-7225

Secretary - Twink Monrad 297-9454

Treasurer - Bob Powell 762-1089

## Board of Directors

2016 - 2017 Bill Penrose 780-1143

2016 Janelle Cortright 223-1675

2015 - 2016 Skip Barkley 546-1651

2016 - 2017 Tom McDevitt 575-0517

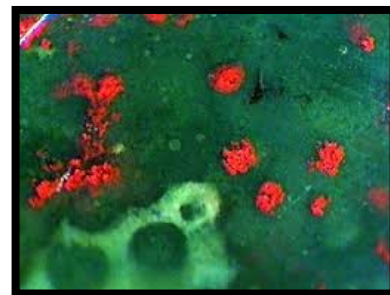
2016 Carol Brown 325-9874

2016 Pete Peterson 886-9021 (Advisor)

## Membership Chairperson

Wayne Klement 954-6298

Please join us **August 13th** at 9:00am for the monthly meeting. There is an optional social hour that begins at 8:00am followed by an educational program at 9:00am, followed by the monthly meeting. Visitors are always welcome.



Articles or news to be included in the *Cutting Remarks* should be emailed to your Editor, Mike DeMeritt ([silverlininggemstones@gmail.com](mailto:silverlininggemstones@gmail.com)), or feel free to call him at 520-203-8430. Submission deadline is the 20<sup>th</sup> of each month. Thanks!

## THE PREZ SEZ ..... by John Poole



It is a hot summer, however, it hasn't slowed OPLC down. Our membership is over 450 and growing slowly weekly. Faceting Monitor Earl Zoeller has new people in his Monday evening class; Mike DeMeritt has just started some new members in his Faceting Class; and Chuck Lunstrom, Casting Monitor, is continuing his Wednesday evening classes. Ron Brooks is in the casting shop on Tuesdays to assist casters who have completed Chuck's evening class.

The Silver Shop Monitors, Terry Cox, Bill Cascio, and myself, are presently conducting classes or are about to start new ones. Most of the monitors in the Lapidary Lab are giving instructions to any members, new or old, to cut and polish cabs. It's a great way for new members to get to know more about OPLC, it's members and at the same time create

something beautiful out of an old rock. The Lapidary/Cabbing Monitors are listed on the shop schedule, inside the last page of our newsletter.

Join me for coffee and breakfast treats at 8 am August 13, 2016. At 9 am our Program Chair, Helen Serras-Herman, has a great program scheduled which will be followed by a short business meeting. Remember to wear your OPLC name tag and receive a free raffle ticket with a purchase.

Our Silent Auction Chair, Tom McDevitt, will have some great prizes on the raffle table.

See you August 13th.

John

## Coming Attractions:

September 10, 2016, Jonathan Ziegler- Photographing minerals & jewelry

October 8, 2016, Raymond Mason- Appraising our gems and jewelry

November 12, 2016, Pat McMahan- Agates

December 10, 2016, Holiday Party

January 14, 2017, Eric Fritz- Raman Spectroscopy

March 11, 2017, Brian Cook, Paraiba Tourmaline & Rutilated Quartz from Brazil

**Front Cover Pictures:** Nice crystal group of **Peridot** from Pakistan, August's birthstone. Spectacular slab of **Bloodstone** (this piece is Fancy Jasper from India) will cut amazing cabs.

*Cutting Remarks*, Volume 2016, Issue 8, August 2016. Published monthly by the Old Pueblo Lapidary Club, 3118 N. Dale, Tucson, AZ 85712. Telephone: (520) 323-9154, a non-profit organization.



## OPLC MONTHLY MEETING

July 9<sup>th</sup> 2016

The meeting was brought to order by President John Poole at 10:05. John thanked our speaker, Chelsea Ellsworth Jones, who was the assistant curator at the Phoenix Art Museum in charge of the exhibit "Cameos: Sculpture in Miniature". She showed a fabulous power point of photos of cameos through the ages.

Refreshments: Melinda and John Thompson were thanked for providing the snacks.

Treasurer's report: Mike DeMeritt will soon be placing a large order for items needed in the shops such as replacement wheels, blades, oil and other things which must be ordered annually. The treasurer's report will be filed for audit. A discussion regarding replacing the coolers in the clubhouse and air conditioning unit in the kitchen or putting air conditioning throughout the clubhouse will be taking place as the cooling units are on their "last legs".

Membership: It stands at over 450 members. Four new members and guests were introduced.

Nominating committee: Volunteers are being sought to fill some vacancies for the Club. We need a president, vice president and two board members. Please call any board member if you wish to volunteer to run for office.

For existing and new labs/classes and for the saw room day please check the schedule as things may change.

Education outreach: John thanked Jim Rundlett who gave a great presentation to a pre-school through 3<sup>rd</sup> grade group.

Raffle sales were \$238. Door prize was won by Tom Porter. There being no further business we adjourned at 10:10 AM.

Twink Monrad, Secretary

August 2016 OPLC speaker  
Chris Osterman talking on Leopard Opal



We are in for another very unique treat for our August 13, 2016 OPLC monthly meeting by our very own distinguished member, Dr. Chris Osterman, who will talk to us about his new venture and gem material, the Leopard Opal from Mexico.

Leopard opal is unique to one location in Hidalgo, Mexico. It consists of green, blue, and purple play of colors in a black matrix. Although 40 tons of rough leopard opal has been mined out of a small open pit, very little is available on the market. The deposit occurs in the contact zone of vesicular basalt and an overlying rhyolite tuff. The silica which formed the opal likely has been leached out of the rhyolite and re-deposited in the spongy spaces in the vesicular basalt. They are looking at the possibility of re-opening the mine, and trying to determine if more leopard opal is available in the ground.

Dr. Chris Osterman has been involved with gold, silver and copper mining for the last 35 years. After earning a Ph.D. in Geology at the Colorado School of Mines, Chris has lived and worked in southern Africa, North and South America, and Central Asia. Currently he serves as the Chief Executive Officer of First Mining Finance Corporation, a company dedicated to the exploration of gold and silver deposits throughout the Americas.

Chris gave us a terrific talk last year on Mongolian turquoise, and he will definitely give us another very informative presentation.

Our previously scheduled speaker, Brian Cook, had to reschedule his presentation for March 2017, as he was accepted into a juried show in California.

Looking forward to seeing you all, Helen Serras-Herman, OPLC Program chair

## WELCOME NEW MEMBERS



Vin	Allen	Mary	Micoletti
William	Freeman	Della	Reese
Audrey	Herrick	Daniel	Rogers
C. Jill	Hofer	Yuri	Talalaev
Andrew	Lee	Victor	Vansickie
Milhaela	Marin-	Elizabeth	Williams
Talalaev			



Arizona Lapidary & Gem Rough  
7320 E Broadway, Tucson AZ 85710  
arizonalapidary.com 520-399-6641

Come Visit Us at Tucson's  
**Year-Round Gem Show**

Minerals ~ Cabochons  
Lapidary Rough ~ Crystals  
Custom Design ~ Rock Cutting

**10% Off for  
Club Members\***

*\* Excludes services & Red Dot items*



**This month's donations will be posted next month...**

To donate to OPLC, just see or contact Mike DeMeritt at 240-5133, or Tom McDevitt at 575-0517

*Allen's Treasure House*

Lapidary supplies, minerals, decorative objects, watch batteries, maps, prospecting tools, much more.



[www.allens-treasure-house.com](http://www.allens-treasure-house.com)

4313 E Grant Road (near Columbus); Tucson AZ 85712;  
(520) 326-5550; mail@allens-treasure-house.com

Call for hours.

Ad Expires June 2017



Beta Diamond Products, Inc.

[www.betadiamond.com](http://www.betadiamond.com)

[info@betadiamond.com](mailto:info@betadiamond.com)

(714)777-7144

Beta Diamond Products would like to thank Old Pueblo Lapidary Club members for choosing our diamond consumables for their polishing and faceting needs. Beta Diamond Products has been in business since 1986 supplying the faceting community with the best U.S. micronized diamond on the market. Use our diamond powder and diamond spray – club favorites! Ask other members about our excellent quality, delivery and price.



**Beta Is Better!!!**

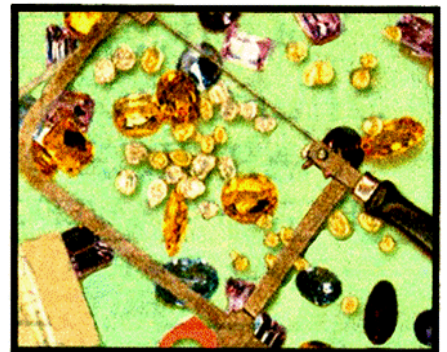
Ad Expires May 2016

# JEWELERS SUPPLIES

**GOLD ★ SILVER ★ SHEET ★ WIRE**

**SINCE 1967**

**For The Professional And Hobbyist**



**882-8750**

**Starr Gems, Inc.**  
[www.silversupplies.com](http://www.silversupplies.com)

Tuesday - Friday 9-5  
Saturday 10-2  
Closed Sunday & Monday



- SILVERSMITH TOOLS
- LAPIDARY EQUIPMENT
- FOREDOM TOOLS
- STONES • BEADS
- FINDINGS • CHAINS
- HOW TO BOOKS

**220 W. DRACHMAN**

SHOWCASES & JEWELRY  
DISPLAY ACCESSORIES

OPLC Members Receive 10% off select merchandise,

And 3-ounce price break on all silver purchases!

Ad Expires June 2015

**MONEY SAVING DISCOUNTS**

- **DAH Rock Shop** - 10% on most items, \$10 minimum purchase. 520-323-0781  
**3401 Dodge Blvd, Tucson**
- **Colorwright** - 520-623-3874 Web address: <http://www.color-wright.com/>, **MAILING ADDRESS:**  
1520 S Desert Crest Dr., Tucson, AZ 85713. Amount of discount depends on item(s) being purchased.
- **Jay's of Tucson** - 30% discount excluding orange tag items, sterling silver sheet and wire. 520-323-1123 (corner of Speedway & Swan)  
**4627 E Speedway, Tucson**
- **Jed's Rock Shop** - 20% on all items. 520-882-6044 - **6275 N Sandario Rd, Tucson**
- **Copper City Rock Shop** - See ad in this issue. 10% discount with ad. 928-425-7885  
**566 Ash, Globe, AZ 85501**
- **Kent's Tools** - 10% discount. 520-624-8098 - **133 E Grant Road, Tucson**
- **Tucson Mineral & Gem World** - 10% 520-883-0682 Web address: [www.tucsonmineral.com](http://www.tucsonmineral.com) **2801 South Kinney Road, Tucson**
- **Arizona Lapidary** - Arizona Lapidary & Gem Rough - 10% Discount \*Excluding Finished Jewelry  
520-399-6641 - 7320 E Broadway Blvd, Tucson
- **Silver Lining Gemstones** - 20-35% discount on most items. 520-203-8430, or see Mike DeMeritt at any of his labs. Includes eBay Store at [www.stores.ebay.com/high-lonesome-turquoise](http://www.stores.ebay.com/high-lonesome-turquoise).
- **Starr Gems** - 10% Discount on select merchandise, and 3-ounce price break for all silver purchases. See ad in this issue. **220 W Drachman, Tucson**

**DON'T FORGET**

Please don't forget to continue to bring in **YOUR** (or anyone else's for that matter) aluminum cans to the Club for recycling. Your contribution would be greatly appreciated to help add \$'s to the Club's treasury. **Thanks!**

**Rate Schedule for Advertisements - - - Ad Sizes & Prices**

1/8 of a page -  
2" H by 3 1/2" W  
\$36.00 per year  
\$18.00 per half year  
\$3.00 per month

1/4 of a vertical page -  
4 1/2" H by 3 1/2" W  
\$48.00 per year  
\$24.00 per half year  
\$4.00 per month

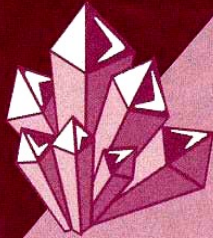
1/4 of horizontal page -  
2" H by 7 1/4" W  
\$48.00 per year  
\$24.00 per half year  
\$4.00 per month

1/2 page - 4 1/2" H by 7 1/4" W  
\$96.00 per year  
\$8.00 per month

Full page - 9 1/2" H by 7 1/4" W  
\$168.00 per year  
\$14.00 per month

# DAH ROCK SHOP

- Crystals
- Fossils
- Minerals
- Meteorites
- Faceted Stones
- Cabochons
- Turquoise
- Tumbled Stones
- Bookends
- Eggs & Spheres



**YOUR BEAD STOP**

104  
DIFFERENT  
VARIETIES  
OF SEMI-PRECIOUS  
STONE BEADS

All Beads Picked  
by Resident Graduate  
Gemologist  
Huge Selection of  
Sterling Silver Findings  
Turquoise from  
Around the World

3401 N. Dodge, 3 blocks N. of Ft. Lowell (520) 323-0781

**LAPIDARY EQUIPMENT -  
STERLING SILVER JEWELRY -  
BOOKS - SLABS - ROUGH  
STONES - BEADING SUPPLIES -  
SILVERSMITH TOOLS**

**HOURS: (TUES - SAT 9:30 - 5:30  
(CLOSED SUN & MON)**

**OPLC MEMBERS RECEIVE 10%  
OFF ON ALL MERCHANDISE  
EXCEPT SPECIALS. \$10 MINIMUM  
PURCHASE.**

**STERLING SILVER WIRES AND  
SHEET RECEIVE THE NEXT PRICE  
BREAK.**

Ad Expires Sept 2015

## COMMITTEES

### ADVERTISING

Mike DeMeritt 203-8430

### BUILDINGS, GROUNDS & EQUIPMENT

Pete Petersen 886-9021

### PROGRAMS

Helen Serras-Herman 761-9907

### CLASSES

Gloria Jean Dana 369-7225

### FIELD TRIPS (COMMITTEE)

Wolfgang Mueller 896-3197

Shiela Powell 578-1976

Janelle Cortwright 761-1924

### HISTORIAN

Bill Cascio 638-8144

### JUNIOR EDUCATION

Ron Graichen 529-2661

### KITCHEN

General Membership

### LIBRARIAN

Twink Monrad 297-9454

### MEMBERSHIP

Wayne Klement 954-6298

### SECURITY

John Poole 777-5588

### SILENT AUCTION

Mike DeMeritt 240-5133

Tom McDevitt 575-0517

### BUSINESS MEETING REFRESHMENTS

Norma Lackow 742-7561



**WEEKLY WORKSHOP SCHEDULE Phone 323-9154**

**Mondays**

9AM - 12PM **Cabbing**

Monitor - Gloria Jean Dana

1PM - 4PM **Silversmith Lab**

Monitor - Terry Cox 296-4949

5PM - 9PM **Cabbing**

Monitor - Joseph Blackcoyote 891-6822

6PM - 9PM **Beginning Faceting**

Monitor - Earl Zoeller 886-3518

**Tuesdays**

9AM - 1PM **Cabbing\***

Monitor - Mike DeMeritt 203-8430

9AM - 1PM **Beginning/OpenLab Faceting\***

Monitor - Mike DeMeritt 203-8430

9AM - Noon **Silversmithing Lab**

Monitor - John Poole 777-5588

9AM - Noon **Rock Sawing**

Monitor - Tim Rose

Noon - 3PM **Casting Open Lab**

Monitor - Ron Brooks 520-378-2592

1PM - 4PM **Cabbing**

Monitor - Jerry Glazman 860-689-3432

**Wednesdays**

9AM - Noon **Cabbing**

Monitor - David Schulte 954-8554

6PM - 9PM **Beginning Casting**

Monitor - Chuck Lundstrom 241-9262

6PM - 9PM **Cabbing**

Monitor - Keith Haubert 784-8283

6PM - 9PM **Silversmithing Lab**

Monitor - Bill Penrose 544-7517

**Thursdays**

9AM - 12PM **Cabbing**

Monitor - Bob Powell 403-8980

9AM - 12PM **Rock Sawing**

Monitor - Pete Peterson 886-9021

1PM - 4PM **Silversmithing**

Monitor - Giac D'Aquisto 207-6219

6PM - 9PM **Silversmithing**

Monitor - Bill Cascio 638-8144

**Fridays**

9AM - 12PM **Cabbing\***

Monitor - Mike DeMeritt 203-8430

1PM - 4PM **Silversmithing**

Monitor - Terry Cox 296-4949

**Saturdays**

10AM - 3PM **Silversmithing**

Monitor - Terry Cox 296-4949

9:30AM - 2:30PM **Cabbing\***

Monitor - Jeff Hanson

**Sundays**

10AM - 3PM **Cabbing**

Monitor - Dennis Murphy 490-9188

10AM - 3PM **Silversmithing Lab**

Monitor - Giac D'Aquisto 207-6219

**\* INSTRUCTION AS AVAILABLE**

Old Pueblo Lapidary Club  
 (Cutting Remarks - August 2016)  
 3118 N. Dale  
 Tucson, AZ 85712  
 (520) 323-9154

OPLC Membership Application - Please Print

Name1 \_\_\_\_\_ Name 2 \_\_\_\_\_ Date \_\_\_\_\_

Local Address \_\_\_\_\_

City \_\_\_\_\_ State \_\_\_\_ Zip Code \_\_\_\_\_ Phone number (\_\_\_\_) \_\_\_\_\_

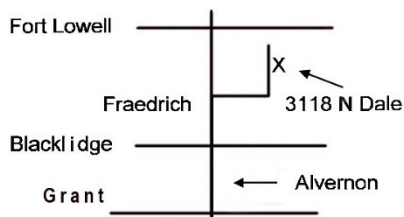
Email address \_\_\_\_\_ Summer Dates: From \_\_\_\_\_ To \_\_\_\_\_

Summer Address \_\_\_\_\_

City \_\_\_\_\_ State \_\_\_\_\_ Zip Code \_\_\_\_\_

Type of membership:	<u>1st Quarter</u>	<u>2nd Quarter</u>	<u>3rd Quarter</u>	<u>4th Quarter</u>	<u>Annual Renewals</u>
Single Member	\$25.00	\$20.00	\$15.00	\$10.00	\$20.00
Couple (same address)	\$35.00	\$27.00	\$22.00	\$15.00	\$25.00
Junior	\$12.50	\$10.00	\$7.50	\$5.00	\$10.00

Mail to: Membership Chairperson, Old Pueblo Lapidary Club, 3118 N. Dale, Tucson, AZ 85712



The Business Meetings are held on the 2<sup>nd</sup> Saturday of each month. A pre-meeting social hour (except for the December meeting) is at 8:00 a.m., followed by an educational program, and ends with the monthly meeting. Visitors are most welcome.