

“CUTTING REMARKS”

The Official Publication of the Old Pueblo Lapidary Club
520-323-9154

Officers

President Victoria Fila 664-0302
Vice President Dave Richardson 245-2172
Secretary Bill Penrose 780-1143
Treasurer Mark Davidson 975-6075

Board of Directors

2021 - 2022 David Schulte 954-8554
2021 - 2022 Donovan Wagner 869-2050
2022 - 2023 Ted Rupp 743-8012
2022 - 2023 Mike Tucker 400-9656
2022 Elizabeth Boccardo 245-0923

Membership Chairperson

Janet Keisler 333-3398

Please join us October 8th, at **9AM** for the monthly meeting. There is an optional social hour that begins at 8:00am followed by the monthly meeting commencing at 9:00am. See meeting minutes for details. Visitors are always welcome.



Articles or news to be included in the *Cutting Remarks* should be emailed to your Editor, Wayne Klement (wayneklem@aol.com) or call him at 520-954-6298. Submission deadline is the 25th of each month. Thanks!

THE PREZ SEZ by Victoria Fila, President

Hello everyone, hope all is well and you all are enjoying double digit temperatures.

Please remember we are having our tailgate sale after the membership meeting. If you are not going to be participating in the sale please do not park on the lab side, until after 8:30 AM. Hoping to see a good turn out and have lots of goodies to choose from.



Field trips: I am looking into getting with Ed Davis to set a date for October. Hoping to have something arranged by our meeting.

Charlie Hirshy led a trip to Winslow AZ and will post pictures on the website.

Next board meeting is on 11/1/22 5:30 PM all are welcome to join.

Hope to see many of you at the meeting on 10/8/22 take care of yourself.

Victoria Fila

OPLC President

WELCOME NEW MEMBERS



Mayumi Harris
Jeff Shen

Ronald Talhelm
Jack & Cathy Yovanov

DONATIONS

Thanks to those that have made donations to help keep this club running! We welcome donations so if you have lapidary related items, please contact Dan Harmsen at (520) 721-8452 to arrange a pickup or drop-off. Recent donations:

Anonymous - slabs, misc rough, tools, specimens, enameling stuff,

Maurice Gervais - Obsidian, mica, petrified wood, fossils, and rough rock.

OPLC Speaker October 9, 2022 – Wolfgang Vaatz Translation of Nature into Jewelry



"Hiking along the Stream", cuff, carved, engraved & textured scene in 18k gold/ Sterling silver bi-metal, oxidized, with 22-24K CA placer gold, and 14K white & rose gold fused and a flush set diamond completing the scene. Photo © Wolfgang Vaatz Wolfgang & Helen at his studio

We are in for another very unique treat for our October 8, 2022 OPLC monthly meeting. Award-winning local artist, Wolfgang Vaatz is returning to share his latest amazing jewelry work. He was here last in January 2016. Wolfgang will share with us his journey from sculptor to jewelry artist with a new presentation titled **Translation of Nature into Jewelry**.

The presentation will include a photo journey to places of inspiration and images of completed art jewelry. All this jewelry is inspired by his family's western nature journeys from the Rocky Mountains to the Pacific Coast.

Wolfgang was born in Namibia, and started his art education in Munich, Germany. After a year in Chicago, he shared his time between Germany and Namibia, holding exhibitions in both countries. In 1990 he returned to the US, and created his large water sculptures and fountains for which he became very well-known. He has been in northern Arizona since 2001, and here in southern Arizona, in Rio Rico, since 2009, when his fascination with gems and minerals from his childhood reawakened. Since then, his jewelry art has evolved dramatically and has created his very own unique style, featuring stunning gemstones and landscapes in metal that are appreciated by collectors nationwide and worldwide.

Please do not miss this presentation. Looking forward to seeing you all,
Helen Serras-Herman, OPLC Program chair

OPLC SPEAKERS 2022 – 2023

Here is the latest list for our upcoming speakers:

November 12 – Jan Rasmussen, geologist, **Mineralogy of Arizona** updated book edition

December – no speaker, holiday party

January 14, 2023- Helen Serras-Herman – **The Mitchell & Merrick Silver Mine and 9 Canyons on Navajo Land**

March 11, 2023, Chris Osterman –**His recent Mining trip to Portugal, Romania, and Bulgaria**

FACE TTING FASCINATION?

Supporting Tucson's fast growing community
of faceting enthusiasts. Faceters Paradise is
your supply destination featuring the full line
of Ultra Tec Faceting Machines.

TUCSON'S
ULTRA TEC
SUPPLIES DEALER

Ultra Tec
↓
♦

VISIT US ONLINE
WWW.FACETERSPARADISE.COM

Faceters Paradise

355 E FORT LOWELL RD.
TUCSON, AZ 85705

520.907.5527

OPEN 11AM - 4PM DAILY

JEWELERS SUPPLIES

GOLD ★ SILVER ★ SHEET ★ WIRE

SINCE 1967

For The Professional And Hobbyist

Now open 10-3 Tuesday, Thursday, Friday and Saturday

Closed Monday,
Wednesday, and Sunday



- SILVERSMITH TOOLS
- LAPIDARY EQUIPMENT
- FOREDOM TOOLS
- STONES • BEADS
- FINDINGS • CHAINS
- HOW TO BOOKS



882-8750

Starr Gems, Inc.

www.silversupplies.com

220 W. DRACHMAN

SHOWCASES & JEWELRY
DISPLAY ACCESSORIES

DAH ROCK SHOP

- Crystals
- Fossils
- Minerals
- Meteorites
- Faceted Stones
- Cabochons
- Turquoise
- Tumbled Stones
- Eggs & Spheres



YOUR BEAD STOP

All Beads Picked
by Resident Graduate
Gemologist

Huge Selection of
Sterling Silver Findings



Ad Expires 12-31-22

3401 N. Dodge, 3 blocks N. of Ft. Lowell (520) 323-0781

STERLING SILVER JEWELRY
BOOKS - SLABS - ROUGH
STONES - BEADING SUPPLIES -

**HOURS: (TUES - SAT 10:30 - 5:00)
CLOSED SUN & MON)**

OPLC MEMBERS RECEIVE 10%
OFF ON ALL MERCHANDISE
EXCEPT SPECIALS.
\$10 MINIMUM PURCHASE

STERLING SILVER WIRES AND
SHEET RECEIVE THE NEXT
PRICE BREAK

Allen's Treasure House

Lapidary supplies, minerals, decorative objects, watch batteries, maps, prospecting tools, much more.



www.allens-treasure-house.com

4313 E Grant Road (near Columbus); Tucson AZ 85712;
(520) 326-5550; mail@allens-treasure-house.com

Usually open:

Monday, Wednesday, Thursday, Friday: 9:45 AM - 5:30 PM;

Saturday 9:45 AM - 5:00 PM

Closed major holidays.

Ad Expires 11-30-22



2745 N. 1st Ave. Tucson, AZ 85719

Lindstrom
Wubbers
3M
OptiVISOR

Euro Tool
Covington Engineering
Cab King
JSP



**OPLC Members receive 10% off most items
except net priced merchandise.**

Monday - Saturday 9 AM to 3PM
520-461-1350

Extended hours coming soon!

Ad Expires 11-30-22

COMMITTEES

ADVERTISING

Twink Monrad (520) 297-9454

BUILDINGS, GROUNDS & EQUIPMENT

Wayne Klement (520) 954-6298

Mike Tucker (520) 400-9656

Pete Petersen (520) 886-9021

PROGRAMS

Helen Serras-Herman (520) 761-9907

CLASSES

Victoria Fila (520) 664-0302

FIELD TRIPS (COMMITTEE)

Victoria Fila (520) 664-0302

HISTORIAN

Twink Monrad (520) 297-9454

JUNIOR EDUCATION

Teresa McCabe 520-490-7850

RAFFLE/DOORPRIZE

Kim Filips (520) 743-8070

KITCHEN

General Membership

LIBRARIAN

Bill Cascio (520) 638-8144

MEMBERSHIP

Janet Keisler (520) 333-3398

SECURITY

John Poole (520) 777-5588

BUSINESS MEETING REFRESHMENTS

Twink Monrad (520) 297-9454

Victoria Fila (520) 664-0302

SILENT AUCTION

Dan Harmsen (520) 721-8452

NEWSLETTER

Wayne Klement (520) 954-6298

WEBSITE

Brian Peterson (520) 449-2660

ARIZONA & GEM LAPIDARY ROUGH

**OPEN!
OPEN!
OPEN!**

**NEW
LOCATION!
GREAT
ROCKS!**



**Central Tucson
5817 E. Speedway Blvd
520-399-6641**

www.ArizonaLapidary.com

Hours

Tues - Fri 11am - 4:30pm

Sat 11am - 4pm

Closed Sunday

MONEY SAVING DISCOUNTS

- **Allen's Treasure House** 10% off of finished jewelry (except custom made), decorator items, and novelties (excludes unformed minerals and specimen sets). 5% off of all other merchandise not having its own discount schedule, including unformed minerals and specimen sets. No discounts on services except per applicable schedule if any. **See ad in newsletter.**
- **DAH Rock Shop** - 10% on most items, \$10 minimum purchase. 520-323-0781 **3401 Dodge Blvd, Tucson. See ad in newsletter.**
- **Kent's Tools** - 10% discount except for net priced merchandise. 520-461-1350 - **2745 N 1st Avenue, Tucson 85719. See ad in newsletter.**
- **Tucson Mineral & Gem World** - 10% 520-883-0682 Web address: www.tucsonmineral.com **2801 South Kinney Road, Tucson**
- **Arizona Lapidary** - Arizona Lapidary & Gem Rough - 5817 E Speedway Blvd. 10% Discount off rough rock 520-399-6641. **See Ad in newsletter.**
- **Silver Lining Gemstones** - 20-35% discount on most items. 520-203-8430. Mike DeMeritt on his Instagram Store (IG Name: **silverlininggemstones**)
- **Starr Gems** - 10% Discount on select merchandise, and 3-ounce price break for all silver purchases. **220 W Drachman, Tucson. See Ad in newsletter.**

Rate Schedule for Advertisements - - - Ad Sizes & Prices

1/8 of a page -
2" H by 3 1/2" W
\$36.00 per year
\$18.00 per half year
\$3.00 per month

1/4 of a vertical page -
4 1/2" H by 3 1/2" W
\$48.00 per year
\$24.00 per half year
\$4.00 per month

1/4 of horizontal page -
2" H by 7 1/4" W
\$48.00 per year
\$24.00 per half year
\$4.00 per month

1/2 page - 4 1/2" H by 7 1/4" W
\$96.00 per year
\$8.00 per month

Full page - 9 1/2" H by 7 1/4" W
\$168.00 per year
\$14.00 per month

BEADHOLIDAY

Tucson's beading destination

KUMIHIMO

SWAROVSKI CRYSTAL

CZECH GLASS

BETSY BEADER

SEMI-PRECIOUS

STONES

SLEEPING BEAUTY

TURQUOISE

CLASPS

BEADS

WIRE

AND MORE



520.696.0032

355 E FORT LOWELL RD

TUCSON, AZ 85705



SKIP THE TRIP

SHOP WITH US ONLINE AT

WWW.BEADHOLIDAY.COM



ALL THE FINDINGS YOU NEED

OPEN 11AM – 4:30PM DAILY

**THIS IS THE LAB SCHEDULE WHICH IS CURRENT AS OF 9-1-22.
PLEASE CALL THE MONITOR THAT IS RUNNING THE LAB AND MAKE SURE THAT THEY HAVE
SPACE FOR YOU.**

Cabbing

Monday 6pm-9pm Donovan Wagner (520) 869 - 2050
Tuesday 9am - 12pm Dan Lilly (801) 995-9692
1st and 3rd Tuesday - - - 12pm-3PM Liz Williams (818) 300 - 5262
2nd and 4th Tuesday- - -1pm-3:30pm Liz Williams (818) 300 - 5262
3:30-6pm Margarete Harris (520) 561-2313
6pm-9pm Brian Petersen (520) 561-2660
Wednesday 6pm-9pm Keith Haubert (520) 784 - 8283
Thursday No Labs scheduled currently.
Friday No Labs scheduled currently.
Saturday 2nd and 3rd Saturdays Victoria Fila (520) 664-0302 Call for times
4th Saturday 9am-2pm Ron Bryan (619) 495-7967
Every Week 2pm-5pm Peter Moma (907) 947-6768
Sundays 9pm-12pm Gloria Shenanaquet (520) 396-9715
12pm-2PM Paul Fickle

Silversmithing

Monday 9pm-12pm David Schulte (520) 945-8554
Tuesday 9am-12pm John Poole (520) 777-5588
Wednesday 10am-4pm Elizabeth Keller Boccardo (520) 245-0923
6PM-9PM Bill Penrose (520) 780-1143 - On Hiatus
Thursday 10am-4pm Sloane Padilla (520) 808-8699 (text only)
6pm-9pm Bill Casico (520) 343-9927
Friday 9am-3pm Giac D'Acquisto (520) 444-4143
Saturday 9am-12pm David Schulte (520) 945-8554
Sunday 10-3 Giac D'Acquisto (520) 444-4143

Faceting

Monday 9am-12pm Dave Richardson (520) 245 - 2172
Wednesday 5:30 - 8:30 Dave Richardson (520) 245 - 2172
Sunday 12:30pm-3:30pm Dave Richardson (520) 245-2172

Casting

New Classes start in September on the first Wednesdays 4 to 7 and will run
4 weeks and start every other month from there. The off months will be open labs.
Call Chuck Lundstrom (520) 241 - 9262

Tuesday 9am-2pm Liz Williams (818) 300 - 5262

Saw Room

Sunday 9am-Noon Mike Tucker (520) 400-9658
Tuesday 9am-Noon Betty Mehlhoff (253) 208-7460
Thursday 9am-Noon Pete Peterson (520) 886-9021

2022 GEM SHOW ✨ January 26 - February 14, 2022 - 9am - 7pm



RAINING TUCSON, AZ ROCKS

SPECIALIZING IN

**METEORITES · FOSSILS
IMPACTITES / MOLDAVITE · SLABS
MINERALS · JEWELRY · ROUGH
CABS · POLISHED MATERIAL**

LAPIDARY EQUIPMENT REPAIR · POLISHING
SLAB CUTTING · CABING SERVICES

OPEN YEAR ROUND
Tuesday - Saturday
10am - 6pm

RainingRocks@hotmail.com

3844 EAST 5th ST
Tucson, AZ 85716
(520) 345-7957

ItsRainingRocks.com

Also visit us at our 2nd location - Building E in Mineral City!

**TUCSON'S
NEWEST
ROCK SHOP!**

Minutes of September 27, 2022 OPLC Board Meeting

5:30 pm, W Penrose, wrp0143@comcast.net

Present: Dave Richardson presiding, Mark Davidson, Bill Penrose, David Schulte, Ted Rupp, John Poole, Wayne Klement, Janet Keisler, Twink Monrad, Donovan Wagner, Mike Tucker, Pete Peterson, Danny Harmsen, Elizabeth Boccardo, Brian Peterson, Sandra Penrose.

Treasurer's Report - Mark Davidson –Financial status remains positive and healthy. (Exact figures available to members on request.)

Membership - Jan Keisler – 386 members in good standing

Labs status:

Cab lab – Donovan Wagner – A new trim saw blade has been received. A slab saw blade has not yet been ordered. Two new monitors are expected to begin soon.

Faceting - Dave Richardson – There are four students at present. A new Ultratech machine has been installed.

Casting - no report

Silver – John Poole – John is recruiting a new class to begin October 4. He is also proposing a class for silver monitors to qualify them to teach the silversmithing class.

Saw room – Mike Tucker, Pete Peterson – Mark Gibson may join the saw room crew.

Field trips: – No report on the Winslow trip.

Refreshment status –Wayne will continue for now.

Silent Auction: Danny Harmsen – The silent auction is scheduled for November 5, 9 am to 2 pm. Flyers are available for distribution. No labs will be open that day. At least two volunteers are needed to help run the auction.

Sympathy cards were passed for signing for Mary Valentine and Helen Serras-Herman.

Liability insurance clarification regarding extent of coverage – Dave Richardson – Questions not resolved: Are there gaps in liability coverage? Guests, lab users, and clubs are covered, but are renters covered? We do not have a definitive answer on this. Renters so far have a Certificate of Insurance, so it has not yet been a critical issue.

New Business –

Dave Smith (member) wanted more information about our faceting work, in the form of a flyer. He is chairman of the Tucson symposium of the Faceter's Guild.

IT'S GETTING TO BE THAT TIME OF YEAR AGAIN...



**20TH ANNUAL SILENT AUCTION
OLD PUEBLO LAPIDARY CLUB**



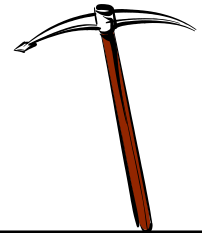
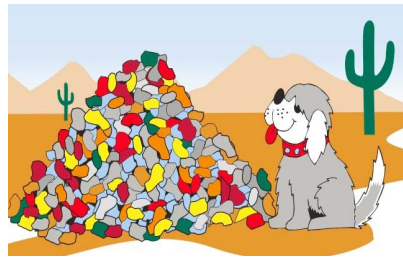
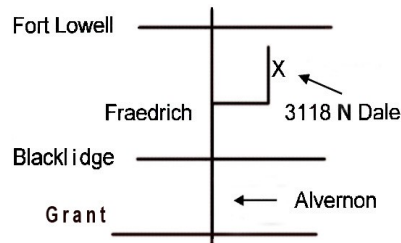
3118 N. Dale, Tucson, AZ 85712
Free parking - Free admission

DATE: Saturday, November 5, 2022 HOURS: 9:00am—2:00pm

This is once-a-year chance to select all your mineral and lapidary needs from a myriad of mineral specimens, turquoise, faceting rough, cutting material, slabs, polished stones, beads, equipment - rock saws, ring saw, cab grinders, kilns, faceting machines, etc.... NOTEWORTHY ITEM - Canyon Diablo (iron) Meteorite. There will also be a "Kid's only table". One of nine tables will be randomly called and replenished every 15 minutes.

For additional information, please contact Danny Harmsen, 520-721-8452.

Come see us on the web: www.lapidaryclub.org



OCTOBER 8th TAILGATE SALE

Old Pueblo Lapidary Club—3118 North Dale

SECOND SATURDAY OF OCTOBER

AFTER THE GENERAL MEETING!!

OPLC members only as sellers!!

**Items for sale MUST be related to the lapidary or
metalsmithing arts or OPLC activities!**

Parking for vendors in North Lot-- FROM 8:00 AM TO 8:30 AM only.

The North Parking Lot WILL be open to monitors working that day.

The South Parking Lot will be open to members and shoppers.

Participants need to bring their own tables.

Again, the tailgate sale will NOT start until the meeting is over

If any questions call John Poole @ 520-777-5588

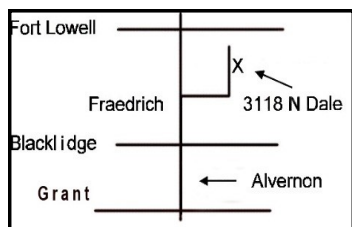
Old Pueblo Lapidary Club
 (Cutting Remarks - September 2022)
 3118 N. Dale
 Tucson, AZ 85712
 (520) 323-9154

OPLC MEMBERSHIP INFORMATION

An application form can be downloaded from the Club website at: lapidaryclub.org/join_us.shtml
 The membership fees shown below are informational purposes only and are listed on the form:

Type of membership:	<u>1st Quarter</u>	<u>2nd Quarter</u>	<u>3rd Quarter</u>	<u>4th Quarter</u>	<u>Annual Renewals</u>
Single Member	\$30.00	\$23.00	\$16.00	\$11.00	\$25.00
Couple (same address)	\$40.00	\$30.00	\$23.00	\$16.00	\$30.00
Junior	\$15.00	\$ 9.00	\$ 6.00	\$3.00	\$10.00

Old Pueblo Lapidary Club, 3118 N. Dale, Tucson, AZ 85712



The Business Meetings are held on the 2nd Saturday of each month except for December. A pre-meeting social hour is at 8:00 a.m., followed by an educational program, and ends with the monthly meeting. Visitors are most welcome.