

“CUTTING REMARKS”

The Official Publication of the Old Pueblo Lapidary Club
520-323-9154

Officers

President Jack McCabe 520-297-3029
Vice President Chuck Lundstrom 520-241-9262
Secretary Bill Penrose 520-780-1143
Treasurer Mike McDowell 206-356-6624

Board of Directors

2025 - 2026 Mark Marikos 520-360-4264
2025 - 2026 Mark Draslodovich 520-906-4657
2024 - 2025 Jan Keisler 520-333-3398
2024 - 2025 Wayne Klement 520-954-6298
2025 Wendy Huber 206-669-6002

Advisor - David Schulte 520-954-8554 (Past President)

Membership Chairperson - Jan Keisler 520-333-3398

Please join us **April 12**
at 9:00am for the next
monthly meeting.
There is an optional
social hour that
begins at 8:00am
followed by the
monthly business
meeting. Visitors are
always welcome.



Articles or news to be included in the *Cutting Remarks* should be emailed to your Editor, Wayne Klement (wayneklem@aol.com) or call him at 520-954-6298. Submission deadline is the 25th of each month. Thanks!

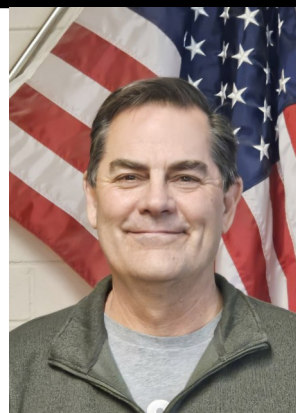
Club mailing address: Old Pueblo Lapidary Club, 3118 N Dale, Tucson, AZ 85712

See us online at: www.lapidaryclub.org

Email address: oplc3118@yahoo.com

THE PREZ SEZ by Jack McCabe, President

Happy April everyone, it's almost time for the Pima County Fair (April 17-27). We still have a need for volunteers to help man our booth for which you will also get free admission to the fair that day. Please contact Dave Richardson at 520-245-2172 if you can help, we have no one signed up for the 20th, 23rd, 27th at this time. We also need items to put on display to show people what the Club is all about. If you have items that you have found on field trips, photos of club activities, items made in the labs or could have been made in the labs, let Dave know and he will arrange drop off times.



Our next Board/business meeting will be at the club on April 29th at 5pm. All members are welcome to attend if you would like to know what we are working on, or you have a suggestion on improvements we can make. Thanks to Wendy Huber for volunteering to fill a vacated Board position.

The Club wanted to let everyone know that Pete Peterson, one of our long-time members and past President, has passed away and another sad announcement, Janelle Cortright, another long-term OPLC member also recently passed away. Our thoughts and prayers go out to their families.

John Poole, our long-term member and Lead for the Silver Lab is turning 85 (Congrats). Unfortunately for the Club he is moving to Colorado and will no longer be a volunteer. Giac (Jack) d'Acquisto has volunteered to step up and run the Silver Lab but that will leave us short of a monitor. If you have experience in the Silver Lab or could help fill some of the many other jobs John performed (like coordinating the tailgate sales) please let any of the Club officers know.

Reminder to all Lab monitors and volunteers that if you are the last car to leave the back lot regardless of the time to please close and lock the doors and gates to the parking lot.

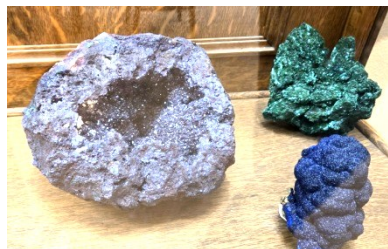
Al Martone is another member who is moving and has lapidary equipment and rock samples that he needs to sell quickly. He can be reached at 406-309-403, just let him know you are from the Club.

Remember we will have a Show and Tell section at the meeting. If you have any examples of projects you created in the labs or if you have been to a good rockhounding area and would like to tell the Club about it we would love to hear from you.

Hope to see you at the Club.

APRIL 12, 2025, OPLC SPEAKERS DOUGLAS (DOUG) L. GRAEME AND RICHARD (RICH) W. GRAEME IV

THE FORGOTTEN CAVES OF BISBEE



Bisbee minerals; With Doug and Rich; Photos by Helen Serras-Herman

We are in for a very special treat for our April 12, 2025, OPLC monthly meeting, with brothers Douglas (Doug) L. Graeme and Richard (Rich) W. Graeme IV coming up from Bisbee to talk to us.

During the last part of the 19th century miners at the booming mining camp at Bisbee in the Arizona Territory began finding natural caves. These caverns were more than the typical calcite and aragonite filled openings stained by iron and manganese oxides. These caverns contained substantial amounts of malachite, azurite, rosasite, and even cuprite. As a result, the caverns were at times colored in deep greens and blues. It was learned that these caves formed as the result of the sugergene (oxidation) alteration of sulfides. Many of the most prolific mineral localities were located in and around these caverns.

Douglas (Doug) L. Graeme and his twin brother **Richard (Rich) W. Graeme IV** were born in Bisbee, Arizona in 1968, and were both underground collecting minerals and artifacts by the age of six. Minerals and mining were the focal points of their youth, with many hundreds of hours spent underground in Bisbee and other western mining areas collecting minerals and mining artifacts. Their focus has been on Bisbee and its incredible mineralogy interspersed with mineral finds elsewhere. They were successful in their quest for minerals and mining-related memorabilia, and shared the news and significance of their discoveries with fellow collectors at frequent presentations at the New Mexico Mineral Symposium.

While Doug collected many fine minerals in his teen years, nothing compares to the extraordinary cuprite he collected with his twin in the Southwest Mine, along with a diverse suite of rare and uncommon copper minerals, some of which remain the best examples known for the species. In 1986, they collected what is surely Bisbee's finest cuprite specimen along with exceptional examples of some of the rarest of copper minerals.

By the time Doug completed three years of university studies with a mining major, the U.S. mining industry was well into its decline. They both worked on the gold dredges of Nome, Alaska, underground in the specimen-rich, fabled Sunnyside Mine at Silverton Colorado, and in the Continental Mine in Fierro, near Silver City New Mexico, gaining first-hand experience in underground mining.

Doug also worked at the Queen Mine Tours as a guide, and in Kartchner Caverns during its

Cont'd on top of next page.....

.....April Speakers Cont'd. from prior page....

development using his mining experience. Now he has returned to work in Bisbee as the Manager for the Queen Mine Tours where his passion and knowledge help keep the legend of Bisbee alive.

Because of the difficult times for the domestic mining industry, Rich switched from a mining major to education and received his degree in education from the University of Arizona in 1999. He now teaches science in Elgin, Arizona.

I am incredibly thankful to Doug and Richard and to Jerry Glazman who arranged for us to view last October some of their extraordinary private collection of Bisbee minerals.

Please make sure you don't miss these great speakers,

Helen Serras-Herman, OPLC Program Chair.

Minutes of OPLC Membership Meeting

March 8, 2025, at 9:00 am at OPLC

William Penrose, Secretary, wrp0143@comcast.net

The presentation was given by Claire Scragg, "Being a Gem Detective", on the history and methods of gemology (or gemology in Britain).

Wayne Klement was thanked for bringing the donuts.

Announcement: The Gila County Gem and Mineral Society is holding a public exhibit on April 26 in Miami, AZ.

New members and visitors introduced themselves.

Treasurer Report – Mike McDowell – Some large expenses, in the budget plan, were needed in the first two months of 2025, so the net financial assets of the club are virtually unchanged from December 31, 2024. Included among purchases were wheels and saw blades, and casting supplies. On the other hand, the Hob Nob netted about \$2600. Exact figures are not published here but are available to members in good standing.

Members approved the Treasurer's report.

Membership – Janet Keisler – 348 members plus about 15 that renewed today.

Wendy Huber was thanked for successfully handling the booth and display at the TGMS Show.

Upcoming Events –

The spring tailgate sale will be held Saturday morning, March 15, from 8 am to noon.

Signup sheets for the County Fair are pinned up. Display case items are also needed.

Field trip – Saturday March 29 - Joy Valley pink chalcedony and fire agate – meet at the gas station off I-10 in Bowie at 9 am

The door prize winner was Teresa McCabe.

The meeting was adjourned at 10:50 am

OPLC SPEAKERS FORECAST 2025

I would like to thank all of our speakers who give us some terrific and diverse presentations that our members have truly enjoyed. They come near and far and we are definitely enriched by their shared knowledge and expertise. And huge thanks to all of our members who come and are great audiences for our speakers.

Here is the latest list for our upcoming speakers:

April 12, 2025, Richard W. Graeme IV & Richard Douglas Graeme, **Bisbee Minerals**

May 10, 2025, Jim Turner, **The Mine with the Iron Door**

June 14, 2025, Chuck Galloway, **History of Mining in Santa Cruz County 1540-1946**

WELCOME NEW MEMBERS



Cholla & Violet Duir
Arthur & Truly Hugger
Adam Kartman
Daniela Lam

Jennifer Lopez-Martinez
Gwyn Robinson
Jeffrey Rogers

Norman Rus
Eva Stoneburner
Jane Wilson

OPLC MEMBERSHIP INFORMATION

An application form can be downloaded from the Club website at: **Old Pueblo Lapidary Club Join US**

MEMBERSHIP RATES FOR NEW MEMBERS

| | <u>Jan - Jun</u> | <u>Jul - Dec</u> |
|---------|------------------|------------------|
| Single | \$35.00 | \$20.00 |
| Couple | \$50.00 | \$35.00 |
| Juniors | \$15.00 | \$10.00 |

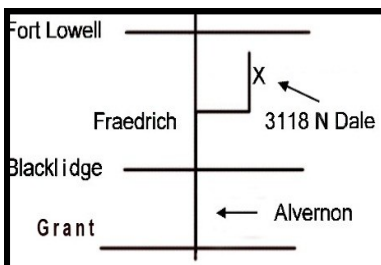
MEMBERS RENEWING

\$30.00
\$45.00
\$10.00

Note: Renewal fees will apply for members returning to rejoin regardless of the time of year.

Make check out to OPLC and mail to:

Old Pueblo Lapidary Club
Attn: Membership Chairperson
3118 N. Dale Avenue
Tucson, AZ 85712



The Business Meetings are held on the 2nd Saturday of each month except for December. A pre-meeting social hour is at 8:00 a.m., followed by an educational program, and ends with the monthly meeting. Visitors are most welcome.

Our email address is: oplc3118@gmail.com

2025 GEM SHOW ✨ OPEN DAILY
January 30 - February 17, 2025 10am- 5pm



RAINING TUCSON, AZ ROCKS

Please visit us at our **NEW location
Tucson's historic
KINO ROCKS & MINERALS
rock shop!**

METEORITES • FOSSILS • JEWELRY
IMPACTITES / MOLDAVITE • SLABS • MINERALS
ROUGH • CABS • LAPIDARY EQUIPMENT • WHOLESALE

**ALSO OPEN
YEAR-ROUND**

(by appointment
the rest of the year
while we remodel)

6756 S Nogales Hwy
Tucson, AZ 85756
(520) 345-7957

RainingRocks@hotmail.com
ItsRainingRocks.com

MONEY SAVING DISCOUNTS

- **Allen's Treasure House** 10% off of finished jewelry (except custom made), decorator items, and novelties (excludes unformed minerals and specimen sets). 5% off of all other merchandise not having its own discount schedule, including unformed minerals and specimen sets. No discounts on services except per applicable schedule if any. See ad on Page 7.
- **DAH Rock Shop** - 10% on most items, \$10 minimum purchase.
520-323-0781 **3401 Dodge Blvd, Tucson. See ad on Page 9.**
- **Kent's Tools** - 10% discount except for net priced merchandise.
520-461-1350 - **2745 N 1st Avenue, Tucson 85719. See ad on Page 10.**
- **Kino Rocks and Minerals** - NEW LOCATION - 6756 S Nogales Hwy, Tucson, AZ 85756 520-345-7957. 10% Discount for OPLC members. See ad on Page 6.
- **Tucson Mineral & Gem World** - 10% 520-883-0682 Web address:
www.tucsonmineral.com **2801 South Kinney Road, Tucson**
- **Arizona Lapidary** - Arizona Lapidary & Gem Rough - 5817 E Speedway Blvd. 10% Discount off rough rock 520-399-6641.
- **Silver Lining Gemstones** - 20-35% discount on most items.
520-203-8430. Mike DeMeritt on his Instagram Store (IG Name: **silverlininggemstones**)
- **Transformational Book Publishing** - 10% discount to members on your first book of 200 pages or less.

Allen's Treasure House

Lapidary supplies, minerals, decorative objects, watch
batteries, maps, prospecting tools, and more.



www.allensreasure-house.com

4313 E Grant Road (near Columbus); Tucson AZ 85712;
(520) 326-5550; agate@allens-treasure-house.com

Usually open: Monday, Wednesday, Thursday & Friday 9:45AM—5:30PM
Saturday 9:45AM—5:00PM Closed major holidays

FACEETING FASCINATION?

Supporting Tucson's fast growing community
of faceting enthusiasts, Faceters Paradise is
your supply destination featuring the full line
of Ultra Tec Faceting Machines.

**TUCSON'S
ULTRA TEC
SUPPLIES DEALER**

Ultra Tec
↓

VISIT US ONLINE
WWW.FACETERSPARADISE.COM

Faceters Paradise

3955 E FORT LOWELL RD.
TUCSON, AZ 85705

520.907.5527

OPEN 11AM - 4PM DAILY

DAH ROCK SHOP

- Crystals
- Fossils
- Minerals
- Meteorites
- Faceted Stones
- Cabochons
- Turquoise
- Tumbled Stones
- Eggs & Spheres



YOUR BEAD STOP

All Beads Picked
by Resident Graduate
Gemologist

Huge Selection of
Sterling Silver Findings



3401 N. Dodge, 3 blocks N. of Ft. Lowell (520) 323-0781

STERLING SILVER JEWELRY
BOOKS - SLABS - ROUGH
STONES - BEADING SUPPLIES

HOURS:

WED - FRI 10:30 - 4:30
SATURDAY 10:30 - 4:00
CLOSED SUNDAY, MONDAY &
TUESDAY

OPLC MEMBERS RECEIVE 10%
OFF ON ALL MERCHANDISE
EXCEPT SPECIALS.
\$10 MINIMUM PURCHASE

STERLING SILVER WIRES AND
SHEET RECEIVE THE NEXT
PRICE BREAK

Rate Schedule for Advertisements - - - Ad Sizes & Prices

1/8 of a page -
2" H by 3 1/2" W
\$36.00 per year
\$18.00 per half year
\$3.00 per month

1/4 of a vertical page -
4 1/2" H by 3 1/2" W
\$48.00 per year
\$24.00 per half year
\$4.00 per month

1/4 of horizontal page -
2" H by 7 1/4" W
\$48.00 per year
\$24.00 per half year
\$4.00 per month

1/2 page - 4 1/2" H by 7 1/4" W
\$96.00 per year
\$8.00 per month

Full page - 9 1/2" H by 7 1/4" W
\$168.00 per year
\$14.00 per month



Kent's Tools

Jewelry
Lapidary Tools
and Supplies
Acacia Jewelry
Tuesday - Saturday
9am - 5pm

OPLC Members
10% Discount
on most items!

www.kentstools.com

Masks Required - provided free inside

@kentstools78

520.461.1350 2745 N. 1st Ave. Tucson, AZ 85719

COMMITTEES

ADVERTISING

Twink Monrad (520) 297-9454

BUILDINGS, GROUNDS & EQUIPMENT

Wayne Klement (520) 954-6298

Mike Tucker (520) 400-9656

PROGRAMS

Helen Serras-Herman (520) 761-9907

CLASSES

FIELD TRIPS (COMMITTEE)

Donovan Wagner (520) 869-2050

HISTORIAN

Twink Monrad (520) 297-9454

JUNIOR EDUCATION

Teresa McCabe 520-490-7850

RAFFLE/DOORPRIZE

Kim Filips (520) 743-8070

KITCHEN

General Membership

LIBRARIAN

Bill Cascio (520) 638-8144

MEMBERSHIP

Janet Keisler (520) 333-3398

SECURITY

TBA

BUSINESS MEETING REFRESHMENTS

Twink Monrad (520) 297-9454

Wayne Klement (520) 954-6298

SILENT AUCTION

Chuck Lundstrom (520) 241-9262

NEWSLETTER

Wayne Klement (520) 954-6298

WEBSITE

Brian Peterson (520) 449-2660

BEADHOLIDAY

Tucson's beading destination

KUMIHIMO

SWAROVSKI CRYSTAL

CZECH GLASS

BETSY BEADER

SEMI-PRECIOUS

STONES

SLEEPING BEAUTY

TURQUOISE

CLASPS

BEADS

WIRE

AND MORE



520.696.0032

355 E FORT LOWELL RD

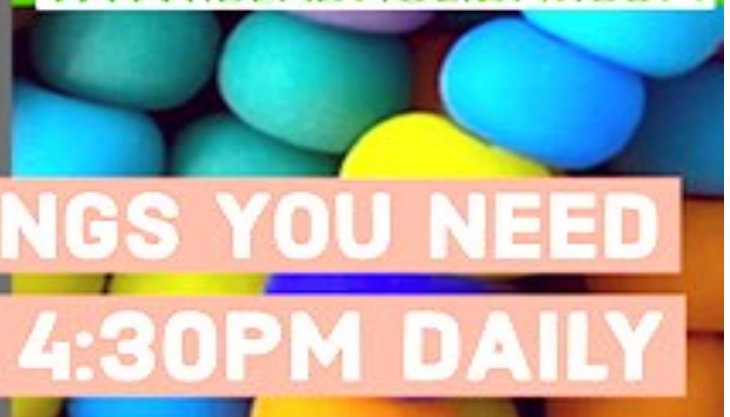
TUCSON, AZ 85705



SKIP THE TRIP

SHOP WITH US ONLINE AT

WWW.BEADHOLIDAY.COM



ALL THE FINDINGS YOU NEED

OPEN 11AM – 4:30PM DAILY

This is the lab schedule which is current as of 3-19-25. Please CALL the Monitor that is running the lab to make sure that they have space for you.

Cabbing

Monday 8am-12pm Mike Wendler (817) 751-0622
6pm-9pm Donovan Wagner (520) 869-2050

Tuesday 9am-12pm 1st and 3rd Tuesday Dan Lilly (801) 995-9692
6pm-9pm Brian Peterson (520) 449-2660

Wednesday 9am-12pm Mark Davidson (520- 975-6075
5pm-8pm Keith Haubert (520) 784- 8283

Thursday 7am-11am Ken Briggs (520) 780-0640
1pm-4pm Wendy Huber (206) 669-6002

Friday No Labs currently scheduled.

Saturday 4th Saturday 9:00am-2pm Ron Bryan (619) 495-7967
7am-12pm Dennis Stock (602) 421-2707
2pm-5pm Wendy Huber (206) 669-6002

Sundays 9am-12pm Gloria Shenanaquet (520) 396-9715
12pm-2PM Paul Fickle (520) 883-6061

Silversmithing

Monday 10am-1pm Jane Morris (727) 743-0883

Tuesday **9am-12pm Bill Cascio (520) 343-9927**

Wednesday **10am-4pm Sloane Padilla (520) 808-8699 (Text Only)**
5:30pm-8:30pm Stephanie Mendibles (520) 460-2101

Thursday 10am-4pm Sloane Padilla (520) 808-8699 (Text Only)

Friday 10am-2pm Giac D'Acquisto (520) 444-4143

Saturday 9am-12pm David Schulte (520) 954-8554

Sunday 10am-2pm Giac D'Acquisto (520) 444-4143

Faceting

Monday 9am-12pm Dave Richardson (520) 245-2172 Class & Open Lab

Wednesday 5:30pm-8:30pm David Schulte (520) 954-8554 Open Lab

Thursday 4pm-7pm Chuck Lundstrom (520) 241-9262 Class

Sunday 12:30pm-3:30pm Dave Richardson (520) 245-2172 Class & Open Lab

Casting

Monday Noon-3pm 1st & 2nd Mondays Liz Williams (818) 300-5262

Tuesday 9am - 12pm Steve Weeks (978)-807-0075 **(Text Only)**

M/W/F 10am - 11 am **(Text First)**

Wednesday 4pm-7pm Chuck Lundstrom (520) 241-9262 Classes every other month, beginning every January, open labs between classes; look for sign-up sheets in the meeting hall. Open lab available when NO class is running. Call for open lab availability.

Thursday 9am-1pm Mark Draslodovich (520)-906-4657

Friday 2pm-5pm 2nd & 4th Fridays Travis Austin (540) 420-3866

Sunday 1pm-4pm 1st & 3rd Sundays Travis Austin (540) 420-3866

Saw Room

Monday 7am-11am Ray Darragh (480) 652-0648

Wednesday 7am-11am Ray Darragh (480) 652-0648

Sunday 9am-Noon Betty Mehlhoff (253) 208-7460

Thursday 7am-11am Betty Mehlhoff (253) 208-7460