

“CUTTING REMARKS”

The Official Publication of the Old Pueblo Lapidary Club
520-323-9154

Officers

President - Bill Carmody 760-8598
Vice President - Bob O'Donnell 886-0384
Secretary - Jenny Coniglio 546-3684
Treasurer - Melinda Thompson 529-0864

Board of Directors

2009 - 2009 Dave Witwer 219-0942
2008 - 2009 Pete Peterson 886-9021
2008 - 2009 Merlyn Hiller 296-4469
2009 - 2010 Skip Barkley 546-1651
2009 - 2010 Ted Rupp 743-8012
2009 - 2009 Ron Davidson 749-3157 (Advisor)

Membership Co-Chairpersons

Wayne Klement 954-6298
Donna Pugh 299-1535

Please join us on March 14th for the next monthly meeting. Optional social hour begins at 8:00 AM followed by the educational program at 9:00am followed by the meeting. Visitors are always welcome.



Articles or news to be included in the *Cutting Remarks* should be emailed to your Editor, Wayne Klement (wayneklem@aol.com), or feel free to call him at 520-954-6298. Submission deadline is the 25th of each month. Thanks!

THE PREZ SEZ by Bill Carmody



The Tucson Gem and Mineral Show is over. Our booth at the TCC had lots of interested visitors, and the club volunteers manning our booth did excellent work. I was very impressed with the variety of lapidary skills we demonstrated. **Thank you! Great job!** The real reward is meeting and interacting with people that have similar interests.

Oh, by the way: **Thank you, TGMS, for including the Old Pueblo Lapidary Club in your show again this year!** It could be odd, but I sure enjoyed the mineral oddities this year. One thing that really captured my lust for minerals was the huge slabs of polished petrified wood. Besides not being able to afford them, I can't imagine where I could put them around my house to display them. But, I want them.

With the TGMS Show successfully behind us, it is time

to look forward to the Pima County Fair. Murray Hiller has the helm as chairman of the fair committee again this year. Murray has the sign-up sheets on the counter in the kitchen for volunteers to exude their charm at our booth. We need at least three people every day – so please sign up at the March meeting or call Murray at 296-4469.

The ninth annual Hob Nob was a complete success with 86 participants from all over the U.S.A. and foreign countries including Russia and Japan. Bob Keller won best overall in the faceted stone competition. In behalf of the Club, I extend a sincere **thank you to Art Kavan** who headed up this activity and ably managed the event. The Hob Nob, sponsored by the OPLC, has gained stature and popularity since its beginnings less than a decade ago.

I mention from time to time the buzz of activity around the

Club's facilities. Well, it's not just happening spontaneously, it's happening through the efforts of the lab monitors and the course instructors. Most of the time, they are unsung heroes just quietly donating their time and talent doing what they love in service to the Club's mission. Well, I would like to sing their praise now – ahem, mi mi mi – Thank yooou! Serious, you are the life blood of the Club and your efforts are most highly appreciated. Thank you. Thank you.

The weather is becoming nicer and nicer. It's time to go rock hounding again – some more. As it warms, more snakes will be out. With the rain that we have had, there are more varmints – hence, more snakes.

Remember: always practice safe rock hounding.

Bill Carmody

AQUAMARINE

Aquamarine is the traditional birthstone for March. This gemstone is blue, or perhaps more correctly, blue-green or aqua variety of the mineral beryl. The hardness and durability of aquamarine make it a fine gemstone, and its light blue or aqua color makes it a fine choice when the harsher colors of some other gemstones would overwhelm or distract from an outfit. Its typical delicate color allows it to be used in a larger stone where its beauty can be impressive.

Aquamarine is colored by trace amounts of iron, and most gem aquamarines have been heat treated to produce the popular blue-green colors from less desirable yellow or pale stones. Aquamarine is mined primarily in Brazil, Nigeria and Zambia.

Cutting Remarks, V2009, Issue 3, March 2009. Published monthly by the Old Pueblo Lapidary Club, 3118 N. Dale, Tucson, AZ 85712. Telephone: (520) 323-9154, a non-profit organization.

FEBRUARY MEETING MINUTES By Jenny Coniglio

There was no meeting in February



2009 TUCSON GEM & MINERAL SHOW ACTIVITIES.....



OPLC member, Abe Lackow (back to the camera) is captivating some kids and their parents demonstrating the art of silversmithing.

On the opening day of the gem show, the OPLC booth was manned by (l-r) Dennis & Lorraine Demerly, Pete Peterson, Don Feyrer, Dave Arens, and Bill Carmody.



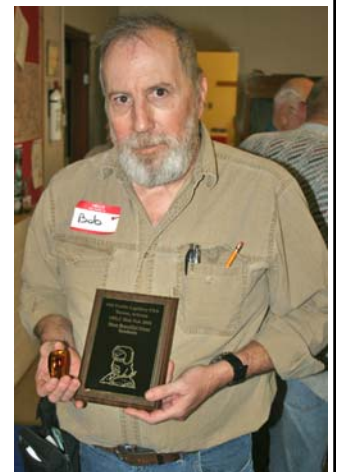
On Saturday, February 7th OPLC provided meeting space for the Ninth Annual Hob Nob which was attended by close to 100 facetors from around the world.



Art Kavan is the center of attention giving a demonstration on faceting a gem stone.

The Hob Nob holds two competitive faceting contests. Show here is Bob Keller, the winner of the synthetic stone contest. Bob cut his stone of his own design, about 250 karats, from molded glass that he called 'soda bar'. He was also interviewed for a future article in Rock and Gem magazine.

The winner of the natural stone contest was Dalan Hargrave (not present at the meeting) for an original cut of his out of ametrine.





NEW MEMBERS

Keith Haubert giving Jenn Bunger and Joseph Black Coyote a tour of Club facilities.

Field Trip to Ray Mine Saturday, March 21, 2009

This trip is limited to first time visitors to Ray Mine

We will meet at 7:00 a.m. in the Trader Joe's parking lot at the Southeast corner of Oracle and Magee. From the parking lot we will travel in designated SUVs which will take us into the mine. The mine is located about 100 miles North, just past Kearny along Route 177. We will be back around 3 p.m.

You will need: a hard hat, safety glasses, long pants, long sleeved shirt, sturdy shoes (no sneakers), rock bag or bucket, rock hammer, water, and snacks.

1. If you would like to be a designated SUV driver and can take three passengers, please call Rim @ 760-8704.
2. There is a nonrefundable \$10 trip fee due at signup. It will go to the drivers for fuel and a carwash.
3. Signup will be at the Saturday, March 14th meeting between 8-9 a.m. (No phone reservations when there is a fee.)

Rim

Family Tree

A little girl asked her mother: 'How did the human race appear?' The mother answered, 'God made



Adam and Eve; they had children; and so was all mankind made.' Two days later the girl asked her father the same question. The father answered, 'Many years ago there were monkeys from which the human race evolved.' The confused girl returned to her mother and said, 'Mum, how is it possible that you told me the human race was created by God, and Dad said they developed from monkeys?' The mother answered,

'Well, Dear, it is very simple. I told you about my side of the family and he told you about his.'

Source Unkown: Internet Email

Rockhounds!

Copper City Rock Shop

566 Ash St.
Globe, AZ 85501
928-425-7885
Open 9 to 5, Tuesday-Saturday

10% off

Well worth
the trip!

We have something for everyone. Cabochons, slabs, cutting rough, minerals, fossils, carving rough, metaphysical goods, tumbling grit, gift items. Visit our web site for just a taste of what we have. Then come up and see it all. Bring this ad and get 10% off.

E-mail: mediz@cablone.net

Ad Expires
December 2009

Diamond Abrasive Consumables FOR LAPIDARY & FACETING

Diamond blades, wheels, powder,
discs, laps, compound/paste,
Aluminum oxide (Linde A, B, C)
cerium oxide, etc.

Maximum Results - Minimum Cost

We proudly supply industry,
government, universities, faceters
and hobbyists throughout North American



Excellent quality product,
delivery, service & price.

BETA DIAMOND PRODUCTS, INC.

P. O. Box 2069

Yorba Linda, CA 92885-1269

Tel: (714)777-7144 / (800)975-9009

FAX: (714)693-9351

www.betadiamond.com

E-mail: rjbetaproducts@earthlink.net

Ad Expires June 2009

From the Casting Lab: Open Casting Days will be on the following Saturday's:

Saturday, February 21st

Saturday, March 7th

Saturday, March 28th

Saturday, April 11th

Saturday, May 2nd

Saturday May 16th

Saturday, June 6th

Saturday, June 20th

Experienced members are welcome to bring in a model (or models) that is ready to cast, limited by space available in the oven. Please contact me at 520.241.9262 to ensure we can meet at 8:00am to get the model invested and into the oven with the class flasks ready to be burned out. Normal lab fees will be charged for the time to complete the entire investment, burn out and casting process, probably about eight (8) hours.

Chuck Lundstrom

SALE STILL GOING ON !!

ROCKS & ROCK SLABS FOR SALE

Ron Davidson - 9219 E. Kayenta

Agates, Petrified Wood, Picture Jasper, Thunder Eggs, Obsidian, Geodes, Slabs, and much, much more. Call 749-3157 to arrange for an appointment to preview items desired.

Ad expires Feb 2010

DONATION

The Club has recently received a very nice donation from Lieutenant Dison of the Tucson Police Department which consisted of rough turquoise and turquoise beads, rough and slabs of malachite, fire agates, quartz crystals, fossils, lapis, tourmaline specimens, and cabs and slabs of amethyst.

Thanks Lieutenant Dison!

DONATIONS

You may contact one of the following individuals if you are interested in making a donation (rocks, equipment, etc.) to the Old Pueblo Lapidary Club. Please call: Bill Carmody at 760-8598 or Dan Harmsen at 721-8452.

Rate Schedule for Advertisements - - - Ad Sizes & Prices

1/8 of a page -
2" H by 3 1/2" W
\$36.00 per year
\$18.00 per half year
\$3.00 per month

1/4 of a vertical page -
4 1/2" H by 3 1/2" W
\$48.00 per year
\$24.00 per half year
\$4.00 per month

1/4 of horizontal page -
2" H by 7 1/4" W
\$48.00 per year
\$24.00 per half year
\$4.00 per month

1/2 page - 4 1/2" H by 7 1/4" W
\$96.00 per year
\$8.00 per month

Full page - 9 1/2" H by 7 1/4" W
\$168.00 per year
\$14.00 per month

JEWELERS SUPPLIES

GOLD ★ SILVER ★ SHEET ★ WIRE

SINCE 1967

For The Professional And Hobbyist



882-8750

Starr Gems, Inc.
www.silversupplies.com

**Tuesday - Friday 9-5
Saturday 10-2
Closed Sunday & Monday**



- SILVERSMITH TOOLS
- LAPIDARY EQUIPMENT
- FOREDOM TOOLS
- STONES • BEADS
- FINDINGS • CHAINS
- HOW TO BOOKS

220 W. DRACHMAN

SHOWCASES & JEWELRY
DISPLAY ACCESSORIES

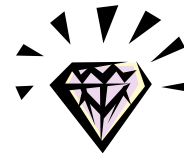
Ad Expires November 2009

MONEY SAVING DISCOUNTS

- **DAH Rock Shop** - 10% on most items. See ad on page 13 of this newsletter. 520-323-0781
- **Colorwright** - Amount of discount depends on item(s) being purchased. 520-623-3874
- **Jay's of Tucson** - 10% discount. 520-323-1123
- **Jed's Rock Shop** - 20% on all items. 520-882-6044
- **Copper City Rock Shop** - Bring in ad from page 14 of this newsletter and get 10% off on all purchases. 928-425-7885
- **Kent's Tools** - 10% 520-624-8098
- **Tucson Mineral & Gem World** - 10% 520-883-0682

WELCOME NEW MEMBERS

Sam Baar
Alan Balmer
Jenn Bungler
Joseph Black Coyote
Gary Knight
Gary Hammer
David Robine
Linda Todd



ADVANCED FACETOR'S CORNER

The January/February question of the month: PERIDOT IS AN ALLOCHROMATIC STONE: **True or False?**

The answer

Come to the March meeting to hear the answer.



DON'T FORGET

Please don't forget to bring in **YOUR** aluminum cans to the Club for recycling. Your contribution would be greatly appreciated to help add \$'s to the Club's treasury.

Thanks !

MONTHLY JEWELRY CONTESTS

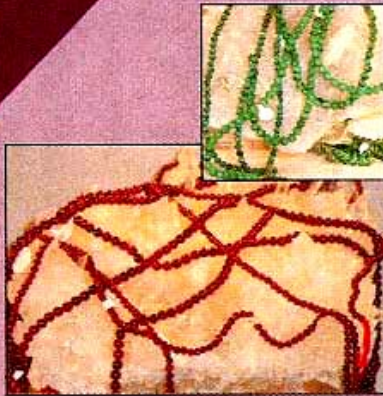
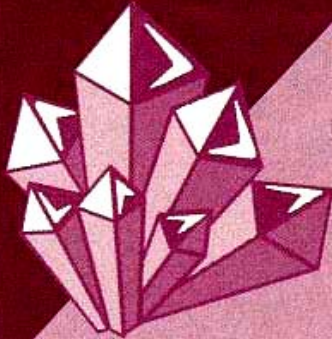
In order for members to better plan for future monthly contests, here is the schedule for each category by month:

January - Bolo Tie	May - Brooch	August - Faceted Stone	November - Bracelet
March - Belt Buckle	June - Cabochon	September - Chain	
April - Necklace	July - Charm	October - Pendent	

There was no meeting in February.

DAH ROCK SHOP

- Crystals
- Fossils
- Minerals
- Meteorites
- Faceted Stones
- Cabochons
- Turquoise
- Tumbled Stones
- Bookends
- Eggs & Spheres



YOUR BEAD STOP

104
DIFFERENT
VARIETIES
OF SEMI-PRECIOUS
STONE BEADS

All Beads Picked
by Resident Graduate
Gemologist

Huge Selection of
Sterling Silver Findings

Turquoise from
Around the World

3401 N. Dodge, 3 blocks N. of Ft. Lowell (520) 323-0781

**LAPIDARY EQUIPMENT - STERLING SILVER JEWELRY - BOOKS - SLABS -
ROUGH STONES - BEADING SUPPLIES - SILVERSMITH TOOLS**

TUES - SAT 9:30 - 5:30

(CLOSED SUN & MON)

3401 NORTH DODGE BLVD

(3 BLOCKS NORTH OF FT. LOWELL)

**OPLC MEMBERS RECEIVE 10% OFF ON ALL MERCHANDISE EXCEPT
SPECIALS.**

STERLING SILVER WIRES AND SHEET RECEIVE THE NEXT PRICE BREAK

Ad Expires March 2009

WEEKLY WORKSHOP SCHEDULE Phone 323-9154

<p><u>Mondays 1 - 4 PM</u></p> <p>Faceting Guild - Fee charged. Experienced facetors only. Contact Paul Head 296-0331</p> <p>Silversmith Lab - Fee charged. Contact Lou Akerman 290-6968</p> <p><u>Mondays 6 - 9 PM</u></p> <p>Beginning Faceting - Class fee charged. Contact Earl Zoeller 886-3518</p> <p><u>Tuesdays 9 AM – Noon</u></p> <p>Open Cabbng - Fee charged. Contact Ron Davidson 749-3157</p> <p>Silversmithing Lab - Fee charged. Contact Ron Davidson 749-3157</p> <p><u>Tuesdays Rock Sawing</u></p> <p>8 - 10AM Dave Arens 749-2113 10AM - 1PM Jim Baker 886-2126</p> <p><u>Wednesdays 1– 4 PM</u></p> <p>Open Silversmith Lab - fee charged Contact John Poole 777-5588</p>	<p><u>Wednesdays 6 - 9PM</u></p> <p>Beginning Casting - Class fee charged. Contact Chuck Lundstrom 577-6446</p> <p>Open Cabbng - Fee charged. Contact Keith Haubert 888-8719</p> <p><u>Thursdays 10AM - 1PM</u></p> <p>Rock Sawing - Fee Charged Monitor - Jim Baker 886-2126 Please call to confirm Jim's availability</p> <p>Beginning Cabbng 1- 4 PM Class fee charged. Contact Frank Beaven 1-810-919-5545</p> <p><u>Fridays 9 AM - Noon</u></p> <p>Open Cabochon Lab - Fee charged. Contact Dan Harmsen 721-8452</p> <p><u>Saturdays 10am - 3pm</u></p> <p>Silversmithing - Ron Davidson 749-3157 Cabbng - Ron Davidson 749-3157 Rock Sawing - Jim Griffin / Ron Davidson</p>
--	--

COMMITTEES

<p><u>ADVERTISING</u></p> <p>Jean Barkley 546-1651</p> <p><u>BUILDINGS, GROUNDS & EQUIPMENT</u></p> <p>Ron Davidson 749-3157</p> <p><u>CLASSES & PROGRAMS</u></p> <p>Bob O'Donnell 886-0384</p> <p><u>CLUB HISTORIAN</u></p> <p>Sylvia Czayo 297-8607</p> <p><u>FIELD TRIPS</u></p> <p>Rim Tallat-Kelpsa 760-8704</p> <p><u>JUNIOR EDUCATION</u></p> <p>Gretchen Arnaiz 747-1511 Sheila Powell 578-1976</p>	<p><u>KITCHEN</u></p> <p>General Membership</p> <p><u>LIBRARIAN</u></p> <p>Susette Flemings 741-2275</p> <p><u>MEMBERSHIP</u></p> <p>Wayne Klement 954-6298 Donna Pugh 299-1535</p> <p><u>SECURITY</u></p> <p>Ron Davidson 749-3157</p> <p><u>SILENT AUCTION</u></p> <p>Dan Harmsen 721-8452</p>
---	--

Old Pueblo Lapidary Club
 (Cutting Remarks - March 2009)
 3118 N. Dale
 Tucson, AZ 85712
 (520) 323-9154

Non-profit Org
 U S Postage Paid
 Tucson, AZ
 Permit # 632

ADDRESS SERVICE REQUESTED

OPLC Membership Application - Please Print

Name1 _____ Name 2 _____ Date _____

Local Address _____

City _____ State ____ Zip Code _____ Phone number (____) _____

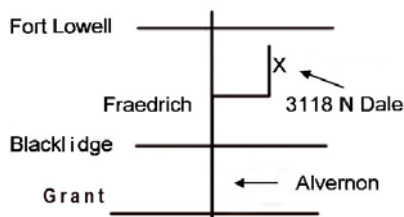
Email address _____ Summer Dates: From _____ To _____

Summer Address _____

City _____ State _____ Zip Code _____

Type of membership:	<u>1st Quarter</u>	<u>2nd Quarter</u>	<u>3rd Quarter</u>	<u>4th Quarter</u>	<u>Annual Renewals</u>
Single Member	\$20.00	\$15.00	\$11.00	\$9.00	\$15.00
Couple (same address)	\$30.00	\$20.00	\$15.00	\$10.00	\$20.00
Junior	\$7.50	\$7.50	\$7.50	\$7.50	\$7.50

Mail to: Membership Chairperson, Old Pueblo Lapidary Club, 3118 N. Dale, Tucson, AZ 85712



The Business Meetings are held on the 2nd Saturday of each month. A pre-meeting social hour (except for the December meeting) is at 8:00 a.m., followed by an educational program, and ends with the monthly meeting. Visitors are most welcome.